

# BioStar 2

## **QUICK GUIDE**

Version 1.01  
English

EN 201.00.BS2 V1.01A

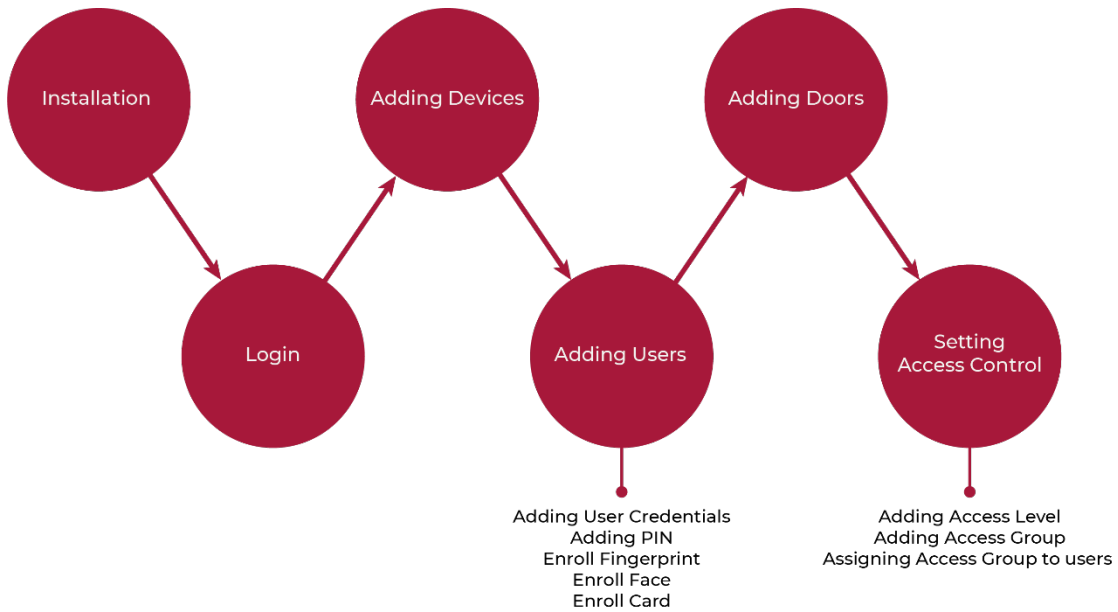
# Contents

---

<b>Introduction .....</b>	<b>3</b>
<b>Installation .....</b>	<b>4</b>
<b>Login .....</b>	<b>9</b>
<b>Adding Devices .....</b>	<b>10</b>
<b>Adding Users.....</b>	<b>11</b>
Adding User Credentials .....	12
Adding PIN .....	12
Enroll Fingerprint .....	12
Enroll Face .....	13
Enroll Card.....	14
Enroll Mobile Credential .....	15
<b>Adding Doors .....</b>	<b>16</b>
<b>Setting Access Control.....</b>	<b>17</b>
Adding Access Level .....	17
Adding Access Group .....	17
Assigning Access Group to users.....	18

# Introduction

This document describes key point for BioStar 2 configuration.



For more information, refer to the BioStar 2 Administrator Guide. To access the BioStar 2 Administrator Guide, click **Help** tab in BioStar 2.

For any inquires or technical support concerning BioStar 2, please contact the Suprema Technical Support Team (<http://support.supremainc.com>).

For efficient technical support, please provide the following information.

- Company name, your name and job title, country information (regional information), contact information and the best time to reach you
- Current BioStar 2 version and device models (examples: BioStar 2 V1.0.233, BioLite Net)
- Details of the error message
- BioStar 2 system log. You can find the BioStar 2 system log in the folder where you installed BioStar 2. (examples: C:\Program Files\BioStar 2(x64)\logs)
- Description of your symptom and problem

# Installation

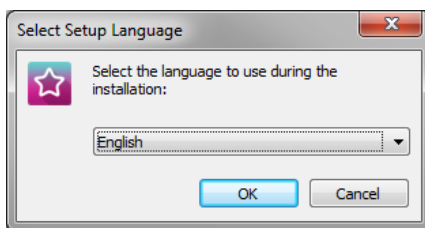
BioStar 2 supports a 32-bit operating system and a 64-bit operating system. Check the system type of your PC where BioStar 2 is to be installed and carry out its installation accordingly.

## NOTE

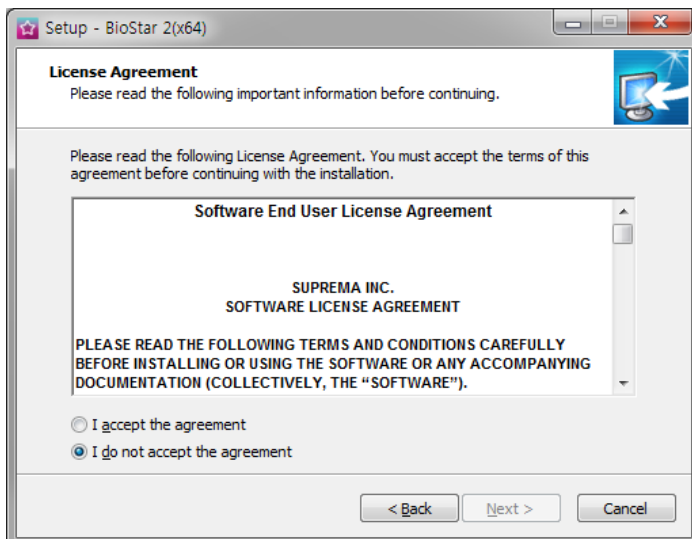
- Do not install BioStar 2 on a PC where BioStar 1 is installed. This may cause performance problems.
- If you are using Windows 8.1 or Windows Server 2012 R2, install the KB2919355 update by referring to the following web page.  
<https://support.microsoft.com/en-us/help/2919355/windows-rt-8-1--windows-8-1--and-windows-server-2012-r2-update-april-2>
- BioStar 2 supports the following databases.
  - MariaDB 10.1.10
  - MS SQL Server 2012
  - MS SQL Server 2014 SP2
  - MS SQL Server 2016 SP1

**1** Double-click the downloaded setup program. (ex. 'BioStar 2 Setup.x.x.x.xxx.exe')

**2** Select a language and click **OK**.



**3** To continue the installation, select **I accept the agreement** and click **Next**.



- 4 Enter the password for admin account and click **Next**. The password set in this step will be used when you log in to BioStar 2.

Setup - BioStar 2(x64)

**Admin User**  
Enter the password for admin user.

Username : admin

Password :

Confirm password :

1. It must contain between 8 and 16 characters.
2. It can contain only English letters, numbers from 0 to 9, and certain special characters (e.g. !, \$, #, %).
3. It must contain at least one alphabet character and at least one number.

**Warning**  
-Admin user password must be managed carefully not to be forgotten.

< Back Next > Cancel

- 5 Install the database to be used in BioStar 2. You can install a new MariaDB or connect it to the already-installed MariaDB. Installing BioStar 2 for the first time, please select **Express Installation** and click **Next**.

Setup - BioStar 2(x64)

**Database installation type**  
Select a database type for BioStar 2. You can either install a new database or connect the existing database.

Express installation  
Use this option for quick installation with the built-in MariaDB server. The installer will automatically install the MariaDB database server and create the database.

Custom installation  
Use this option to create database schema on an existing database on a database server (MariaDB / Oracle) on the local or remote server. Make sure that the database and user account are created and configured before starting the installation.

< Back Next > Cancel

- 6 If **Express Installation** has been selected from **Database Installation Type**, enter the **database manager's account password** and click **Next**. If **Custom Installation** has been selected from **Database Installation Type**, enter the detailed information on the already-configured database and click **Next**.

**Express Installation**  
Enter the password for database root account.

Username : root

Password :

Confirm password :

1. It must contain between 8 and 16 characters.
2. It can contain only English letters, numbers from 0 to 9, and certain special characters (e.g. !, \$, #, %).
3. Enter the existing root account password when upgrading the server.

**Warning**  
-Root account password must be managed carefully not to be forgotten.  
-Root account password is also used as the initial AC and TA DB passwords.  
-When the password is lost, it will not be able to make a version upgrade and DB backup/recovery.

< Back   Next >   Cancel

**Custom installation**  
If you choose database type, you must enter the Root privilege account information.

DB Type :

Server IP :     VE DB name :

Server port :     VE Username :

AC DB name :     VE Password :

AC Username :

AC Password :

TA DB name :

TA Username :      Check the database connection

TA Password :      Generate the database tables

< Back   Next >   Cancel

- 7 Click **Next** after setting a path for BioStar 2 to be installed.

**Select Destination Location**  
Where should BioStar 2(x64) be installed?

Setup will install BioStar 2(x64) into the following folder.

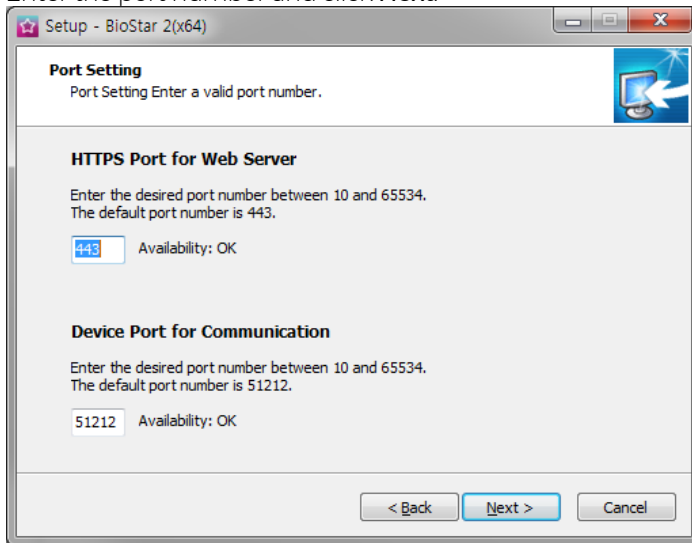
To continue, click Next. If you would like to select a different folder, click Browse.

D:\Program Files\BioStar 2(x64)    Browse...

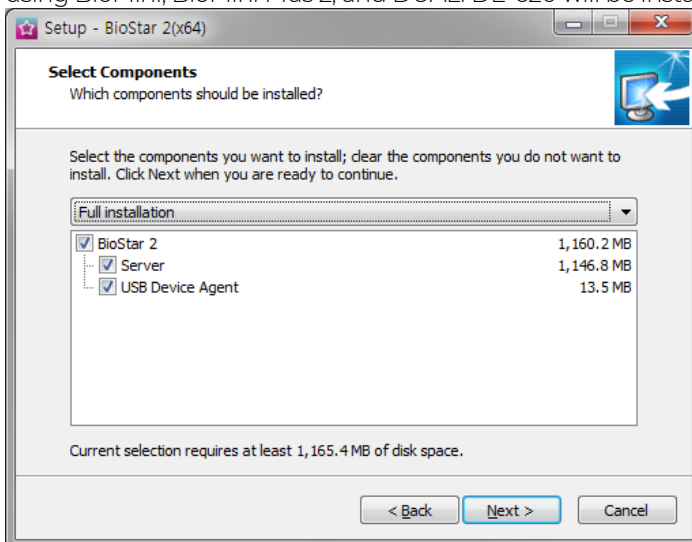
At least 133.1 MB of free disk space is required.

< Back   Next >   Cancel

- 8 Enter the port number and click **Next**.

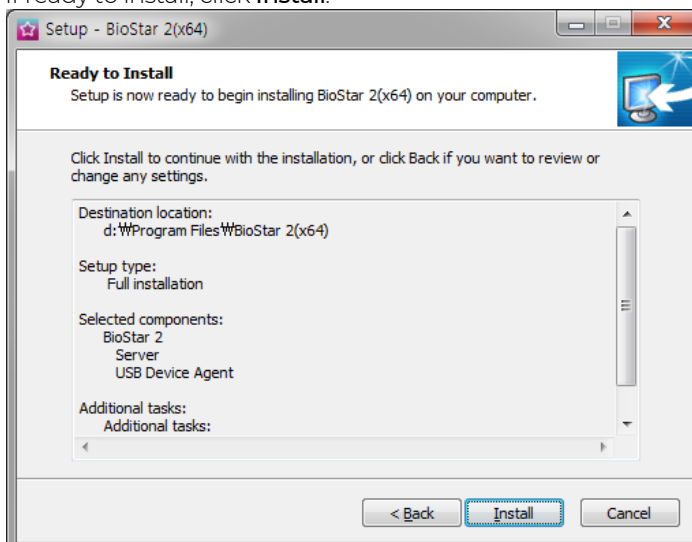


- 9 Select a component of BioStar 2 and click **Next**. If you select **USB Device Agent**, a USB-Agent and a driver for using BioMini, BioMini Plus 2, and DUALi DE-620 will be installed together.

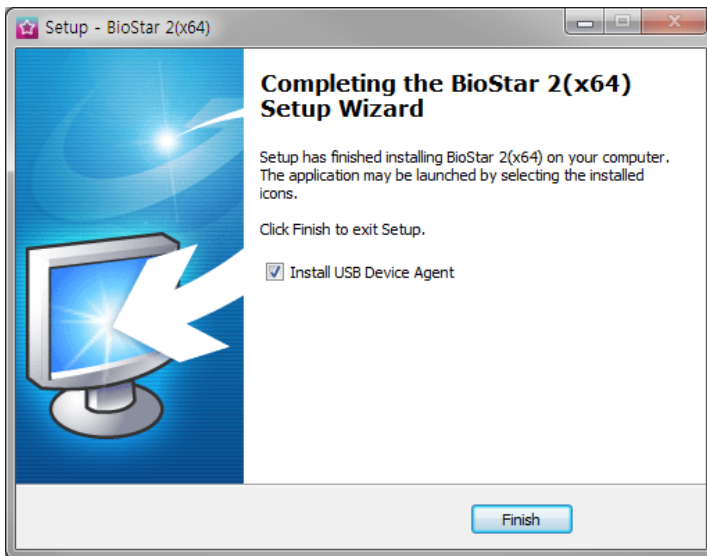


S

- 10 If ready to install, click **Install**.



- 11** Select whether to install additional program and click **Finish**. Follow on screen instructions to complete.





# Login

BioStar 2 is a web-based system which can be accessed from anywhere as long as you remember your login ID and password.

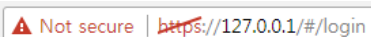
**1** Run your Google Chrome web browser. We recommend that you use Google Chrome 75 or later.

**2** Enter *https://BioStar 2 server IP address* in the address input field of the web browser.

## NOTE

- BioStar 2 uses port 443. If port 443 is used by a program, quit the program and try again. If the program cannot be closed, run 'Biosstar Setting' to change the HTTP port.

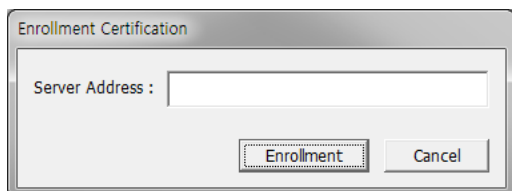
**3** Log in with the administrator account. The administrator account ID is "admin" and when you log in for the first time, **Not secure** warning will be displayed in the address bar.



**4** To use HTTPS properly, register the IP address of the PC where BioStar 2 is installed. Click **Download https certification install program**.

**5** Unzip the downloaded file and run **cert-register.exe** file. **Enrollment Certification** window will appear.

**6** Enter the IP address of the PC where BioStar 2 is installed and click **Enrollment**.



**7** Check the security warning message and click **Yes**.

**8** When you restart the web browser and enter the registered IP address, **Secure** will appear on the address bar of the web browser.



# Adding Devices

You can automatically search for devices connected to BioStar 2 and register them. Before searching for devices, check whether they are correctly connected. When adding multiple devices at once, it will be more convenient to know the location, ID and IP address information of each device in advance.

- 1 Click **DEVICE > SEARCH DEVICE**. All available devices are shown.
- 2 Click **Set IP**.
- 3 To enter the BioStar 2 server information, select **Device → Server** and enter the **Server IP** and **Server Port**.

ID	Device Type
538102578	BioLiteNet

- Use DHCP
  - IP Address: 192.168.16.207
  - Subnet Mask: 255.255.255.0
  - Gateway: 192.168.16.1
  - Device Port: 51211
- Device → Server Connection
  - Server IP: 192.168.1.6
  - Server Port: 51212

Apply Cancel

- 4 To save the settings, click **Apply**.
- 5 To register all waiting devices in the **Waiting Device** group, right-click on the group name and click **Add All Waiting Devices**. To register each device, right-click on the device name and click **Add Waiting Device**.

# Adding Users

You can add a user information such as name, email, ID, and credentials.

- 1** Click **USER > ADD USER**.
- 2** Enter or select the necessary fields in the **Information** tab.
- 3** Enter or select the necessary fields in the **Credential** tab.
- 4** To save the settings, click **Apply**.

## Adding User Credentials

### Adding PIN

- 1 Select the **PIN** option and enter a PIN to use.

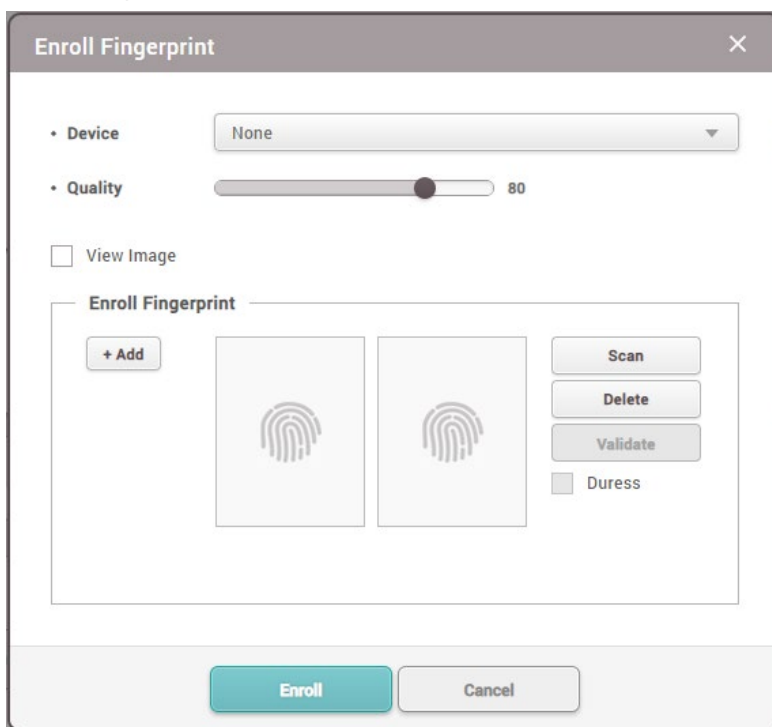


- 2 Enter the PIN again in **Confirm PIN**.

- 3 To save the settings, click **Apply**.

### Enroll Fingerprint

- 1 Click **+ Fingerprint**.



- 2 Select a device to enroll the fingerprint with.

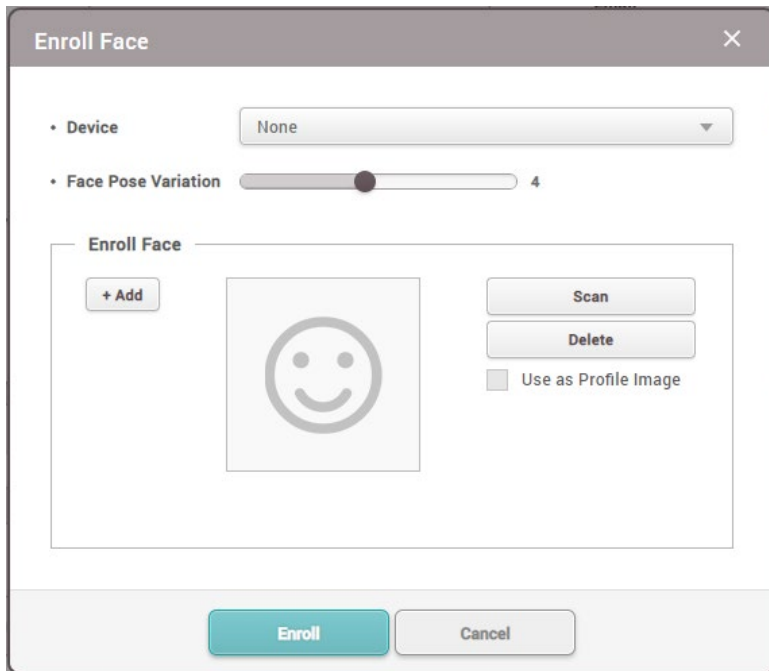
- 3 Select a fingerprint enrollment quality level. Any fingerprint which does not meet the quality requirement will not be enrolled.

- 4 Click **Scan** and then place a finger on the fingerprint scanner or the device sensor.

- 5 To enroll the fingerprint, click **Enroll**.

## Enroll Face

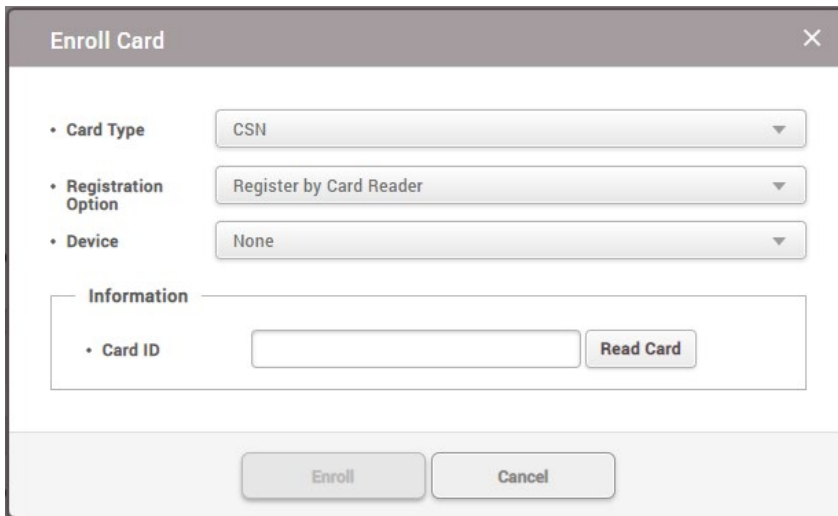
- 1 Click **+ Face**.



- 2 Select a device to enroll the face with.
- 3 Set the sensitivity for the position, angle, and distance of a face when registering the face. Set the sensitivity high if you wish to obtain a detailed face template.
- 4 Click **Scan** and then follow the instructions on the device screen to scan.
- 5 To enroll the face, click **Enroll**.

## Enroll Card

- 1 Click **+ Card** and configure the settings.



The screenshot shows a dialog box titled "Enroll Card" with a close button in the top right corner. The dialog contains the following elements:

- Card Type:** A dropdown menu currently showing "CSN".
- Registration Option:** A dropdown menu currently showing "Register by Card Reader".
- Device:** A dropdown menu currently showing "None".
- Information:** A section containing a "Card ID" input field and a "Read Card" button.
- Buttons:** "Enroll" and "Cancel" buttons at the bottom of the dialog.

- 2 Select **Card Type**. You can select the card type while **CSN**, **Wiegand**, **Smart Card**, or **Read Card**.
- 3 Configure the settings.
- 4 To enroll the card, click **Enroll**.

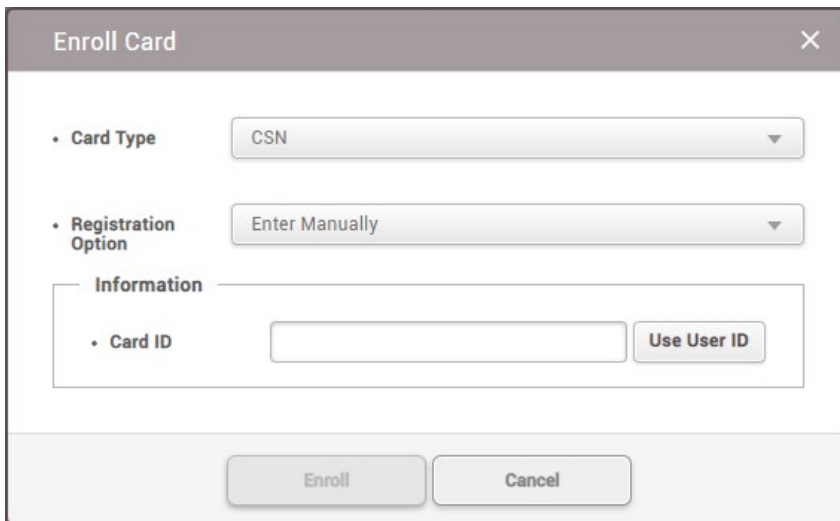
## Enroll Mobile Credential

You can assign the mobile credential to users when using the mobile credential in conjunction with Suprema Mobile Credential Portal.

### NOTE

- To use Mobile Credentials with BioStar 2, complete the Mobile Credential Portal sign-up and initial setup first. And then set up the mobile credential in **Settings > MOBILE CREDENTIAL**.

- 1 Click **+ Mobile** and configure the settings.



The screenshot shows a dialog box titled "Enroll Card" with a close button (X) in the top right corner. The dialog contains the following elements:

- Card Type:** A dropdown menu currently displaying "CSN".
- Registration Option:** A dropdown menu currently displaying "Enter Manually".
- Information:** A section containing a "Card ID" input field and a "Use User ID" button.
- Buttons:** "Enroll" and "Cancel" buttons are located at the bottom of the dialog.

- 2 Select **Registration Option**. You can select the registration option while **Assign Card** or **Enter Manually**.
- 3 Configure the settings.
- 4 To enroll the mobile credential, click **Enroll**.

# Adding Doors

You can configure the doors to use in your access control.

- 1** Click **DOOR > ADD DOOR**.
- 2** Enter the necessary fields in the **Information** tab.
- 3** Configure **Entry Device**, **Door Relay**, **Exit Button**, **Door Sensor**, and **Exit Device** in the **Configuration** tab.  
An exit device can only be used when there is a slave device connected.
- 4** Configure the necessary fields in the **Option** tab and click **Apply**.



# Setting Access Control

You can create access levels by configuring doors and access schedules and to configure access groups using access levels and user group information.

## Adding Access Level

- 1 Click **ACCESS CONTROL > ADD ACCESS LEVEL**

Door	Schedule	
Door 1	Always	

- 2 Enter **Name** and **Description** for the access level, and then click **+Add**.

- 3 Select a door and a schedule to assign this access level.

- 4 To save the settings, click **Apply**.

## Adding Access Group

- 1 Click **ACCESS CONTROL > ADD ACCESS GROUP**.

- 2 Enter **Name** and **Description** for the access group, and then click **+Add**.

- 3** Select an access level, a floor level, a user group or a user to assign this access group.
- 4** To save the settings, click **Apply**.

## Assigning Access Group to users

- 1** Click **ACCESS CONTROL > ADD ACCESS GROUP**.
- 2** Enter **Name** and **Description** for the access group.
- 3** Click **+Add** of **Access Level** to select the access level to assign to users.
- 4** Click **+Add** of **User Group** to select the user group to assign to the access group. Alternatively, you can assign an access group to each user by clicking **+ Add** of **User**.
- 5** To save the settings, click to **Apply**.

The logo for Suprema, featuring the word "suprema" in a white, lowercase, sans-serif font. Below it, the words "BIOMETRICS & SECURITY" are written in a smaller, all-caps, sans-serif font. The logo is set against a dark red rectangular background.

**suprema**  
BIOMETRICS & SECURITY

**Suprema Inc.**

17F Parkview Tower, 248, Jeongjail-ro, Bundang- gu, Seongnam-si, Gyeonggi-do, 13554, Rep. of KOREA  
Tel: +82 31 783 4502 | Fax: +82 31 783 4503 | Inquiry: [sales@supremainc.com](mailto:sales@supremainc.com)

©2020 Suprema Inc. Suprema and identifying product names and numbers herein are registered trade marks of Suprema, Inc. All non-Suprema brands and product names are trademarks or registered trademarks of their respective companies. Product appearance, build status and/or specifications are subject to change without notice.