

Guía de instalación de NOVUS

Versión 1.00
Español

ES 101.00.NVS07_D1/NVS07_D1K V1.00A

Contenido

Instrucciones de seguridad	4
Introducción	6
Componentes.....	6
Componentes básicos	6
Componentes opcionales	7
Desmontar la cubierta del dispositivo.....	8
Desmontaje de la tapa posterior	8
Desmontar la cubierta.....	9
Nombre y función de cada parte.....	10
Frente	10
Nombre de cada parte	11
Cubierta.....	11
Tapa posterior	12
Instalación	13
Fijación del dispositivo	13
Instalación de la parte básica	15
Fuente de alimentación	15
Ethernet / PoE (Power over Ethernet).....	15
Batería	16
Relé.....	17
Wiegand	17
Instalación de la partes opcionales.....	18
Sensor de huellas dactilares	18
Módulo RFID	20
MSR (Magnetic Swipe Reader - Lector de Banda Magnética)	21
GPS	22
Ethernet inalámbrico	22
Módem celular	23
Instalación de la aplicación	25
Desinstalación de la aplicación.....	25
Actualización de la aplicación	25
Especificaciones del producto.....	26
Dispositivo básico	26
Partes opcionales	27
Dimensiones	28
FCC compliance information	29
FCC Compliance Statement.....	29
FCC Interference Statement.....	29
FCC Caution.....	29
FCC Radiation Exposure Statement	29
Industry Canada Statement.....	29
Industry Canada Statement.....	29
Industry Canada Radiation Exposure Statement.....	29
EU Declaration of Conformity (CE)	30
Apéndices	31
Cómo enrolar una huella dactilar correctamente.....	31
Seleccione un dedo para introducir la huella.....	31
Método de enrolamiento de huellas dactilares	31
Descargos de responsabilidad	32
Aviso de derechos de autor	32

Licencia de código abierto	32
GNU GENERAL PUBLIC LICENSE.....	32
BoringSSL License	36
OpenSSL License.....	36
Original SSLeay License	37
Chromium License	39
Apache License	40

Instrucciones de seguridad

Tenga en cuenta las siguientes instrucciones para utilizar el producto de forma segura y evitar cualquier riesgo de lesiones o daños materiales.



Advertencia

El incumplimiento de las instrucciones podría provocar lesiones graves o la muerte.

Instalación

No instale el producto en un lugar con luz solar directa, humedad, polvo u hollín.

- Puede producirse un incendio o una descarga eléctrica.

No instale el producto en un lugar con calor de un calefactor eléctrico.

- Puede producirse un incendio o una descarga eléctrica debido a sobrecalentamiento.

Instale el producto en un lugar seco.

- De lo contrario, puede producirse un daño del producto o una descarga eléctrica debido a la humedad.

Solo personal técnico calificado debe instalar, realizar mantenimiento o reparar el producto.

- Puede ocurrir un incendio, una descarga eléctrica o lesiones personales.
- Los daños causados por personal no calificado anularán la garantía del producto. Los costos de reparación del producto se cotizarán basados en el diagnóstico y los precios de las partes a reemplazar.

Operación

No permita que líquidos como agua, bebidas o productos químicos entren en el producto.

- Puede ocurrir un incendio, una descarga eléctrica o daños en el producto.



Precaución

El incumplimiento de las instrucciones del producto podría provocar lesiones graves o el daño del producto.

Instalación

No instale el cable de la fuente de alimentación en un lugar donde cree un peligro de tropiezo para las personas que pasan por allí.

- Pueden producirse daños en el producto o lesiones físicas.

Utilice únicamente adaptadores, baterías y cables aprobados por Suprema.

- Si no se utiliza la alimentación adecuada, es posible que el producto no funcione con normalidad.

Operación

No deje caer el producto o aplique fuerza a la cubierta del mismo.

- Pueden producirse fallas en el producto.

No presione forzosamente los botones del producto ni utilice una herramienta afilada en la pantalla táctil ni en las teclas físicas.

- Pueden producirse fallas en el producto.

Cuando limpie el producto, use un paño suave y seco.

No utilice productos de limpieza fuertes.

- Estos pueden causar un fallo en el producto.

NOVUS utiliza pantalla y botones capacitivos. Si el entorno está húmedo por el clima o la superficie del producto está mojada con mucha agua, limpie el producto con una toalla seca antes de usarlo.

Batería RTC

Reemplazar la batería por un tipo incorrecto de batería puede causar una explosión.

Deseche la batería de acuerdo con la normativa de residuos regional o internacional correspondiente.

Introducción

Suprema NOVUS es una estación de trabajo multimedia diseñada para soportar cualquier aplicación de Tiempo y Asistencia o Gestión de Personal.

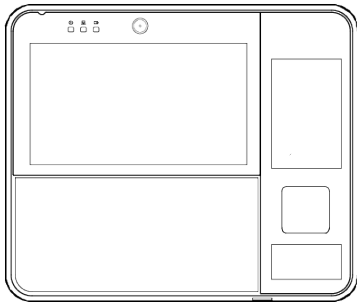
NOVUS proporciona un entorno actualizado de desarrollo y rico en características que permite a los socios e integradores integrar y ampliar las funcionalidades de sus aplicaciones existentes utilizando las potentes capacidades integradas del sistema. El SDK de Android SVP (Plataforma Versátil Suprema) permite a los socios e integradores aplicar las características avanzadas y el alto rendimiento de NOVUS en sus aplicaciones existentes o nuevas.

Para conocer más sobre SVP Android SDK, visite <http://kb.supremainc.com/svpsdk>.

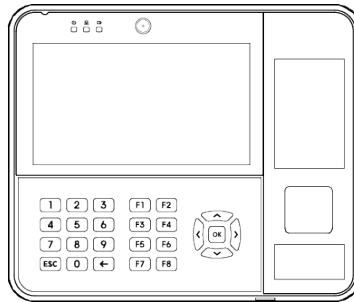
Los socios e integradores pueden utilizar credenciales como huellas dactilares, tarjetas RFID, tarjetas de banda magnética y entrada de PIN seleccionando las opciones que necesitan. NOVUS también ofrece las opciones de Wi-Fi, GPS y Módem celular 4G.

Componentes

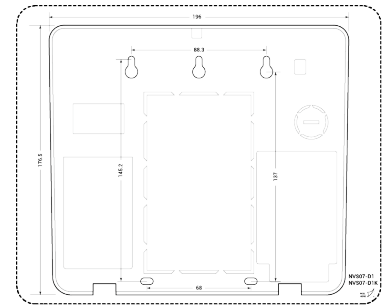
Componentes básicos



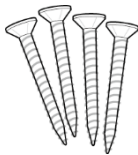
NOVUS (NVS07-D1)



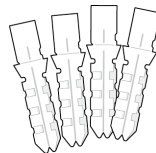
NOVUS (NVS07-D1K)



Plantilla de perforación



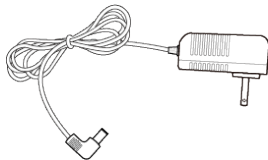
4 tornillos de fijación



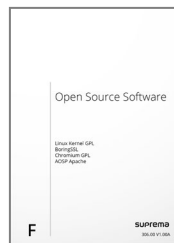
4 anclajes de PVC



2 llaves



Adaptador de Alimentación



Guía de software de Guía rápida código abierto



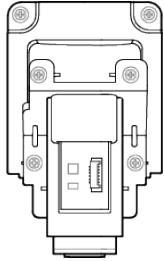
Guía rápida

NOTA

- Los componentes pueden variar según los requerimientos del entorno de instalación.
- Usted puede seleccionar NOVUS NVS07-D1 o NVS07-D1K.
- Si se instala, la opción del lector de banda magnética es montada en el lado derecho de la cubierta del NOVUS. El instalador debe permitir el acceso al lector de banda magnética por parte de los usuarios finales al elegir la ubicación de instalación en el sitio.

Componentes opcionales

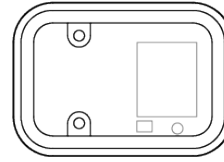
Puede ensamblar las partes opcionales que necesite en NOVUS. Para obtener más información sobre cómo instalar cada opción, consulte la [Instalación de la partes opcionales](#) en esta guía.



Incluye

- Sensor de huellas dactilares
- Cable
- FCC
- Soporte
- 6 tornillos M3

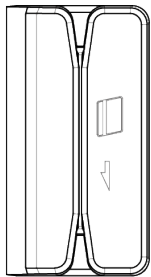
Sensor de huellas dactilares



Incluye

- Módulo RFID
- Cable
- 2 tornillos M3

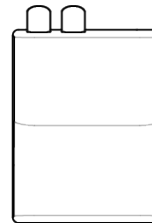
RFID Module



Incluye

- Lector de banda magnética
- Cable
- Tapa
- 2 tornillos M3

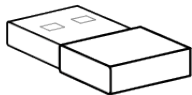
Lector de banda magnética



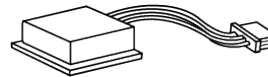
Incluye

- Módem
- Cable de la antena del modem
- Cable USB para datos del modem
- Soporte
- 1 tornillo M3

Módem celular



Dongle Wi-Fi



Incluye

- Módulo GPS
- Cable

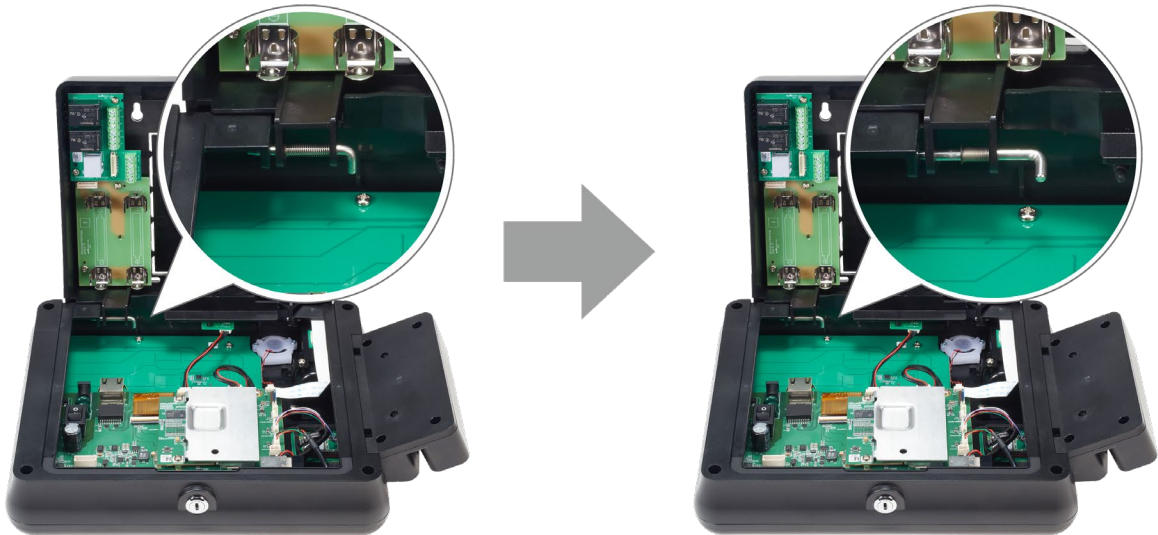
Módulo GPS

Desmontar la cubierta del dispositivo

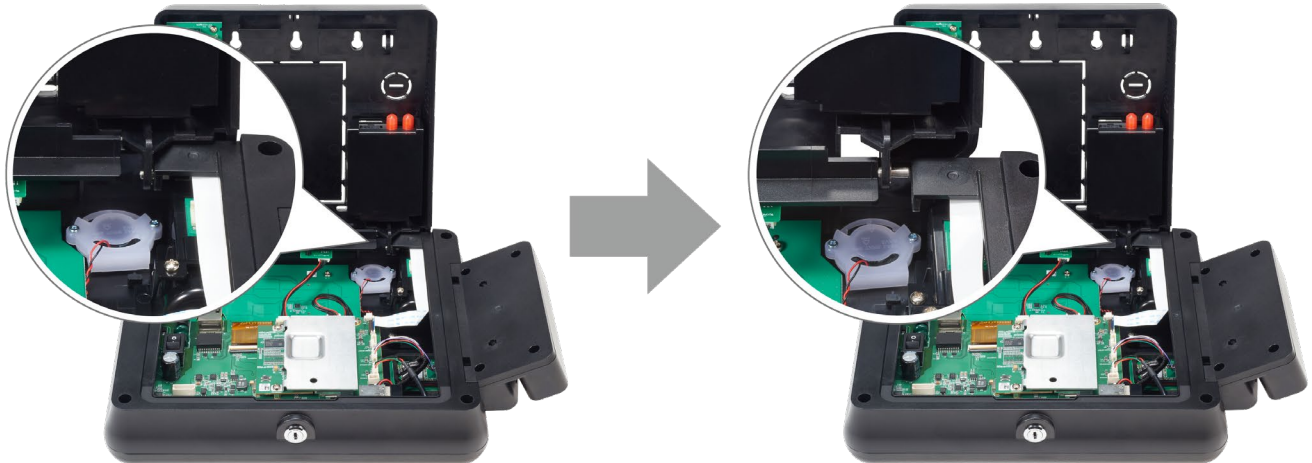
Desmontaje de la tapa posterior

Para montar o desmontar algunas partes opcionales y conectar cables, es necesario retirar la tapa posterior.

- 1** Desbloquee el dispositivo con la llave y abra la tapa posterior del dispositivo.
- 2** Desconecte un lado del cable y la correa que están conectados a la tapa posterior y al lado de la cubierta.
- 3** Tire del seguro del lado izquierdo y desmonte la tapa posterior de la cubierta.



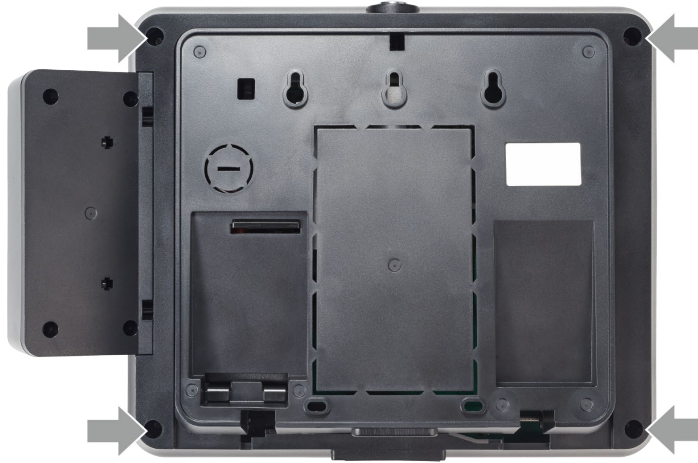
- 4** Tire del seguro del lado derecho y desmonte completamente la tapa posterior de la cubierta.



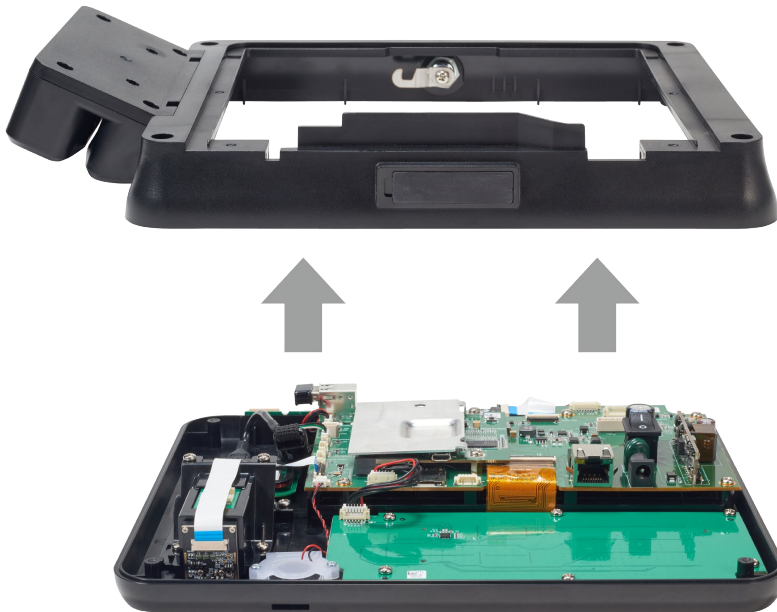
Desmontar la cubierta

Para ensamblar algunas partes opcionales, es necesario retirar la cubierta.

- 1** Desconecte el lado del cable que está conectado a las partes delantera y posterior de la cubierta. Si se monta un lector de banda magnética en el dispositivo, debe desconectar el cable del módulo MSR.
- 2** Afloje los cuatro tornillos de la parte posterior de la cubierta.

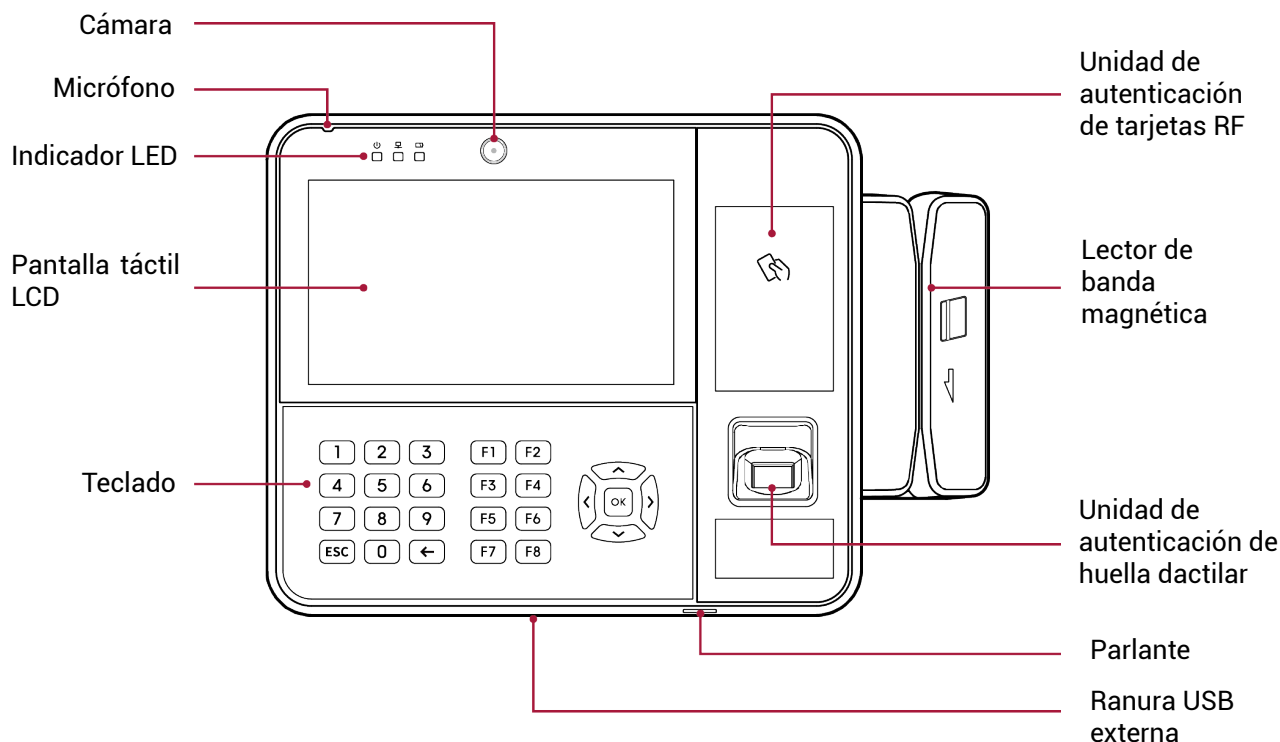


- 3** Desmonte la parte delantera y posterior de la cubierta.



Nombre y función de cada parte

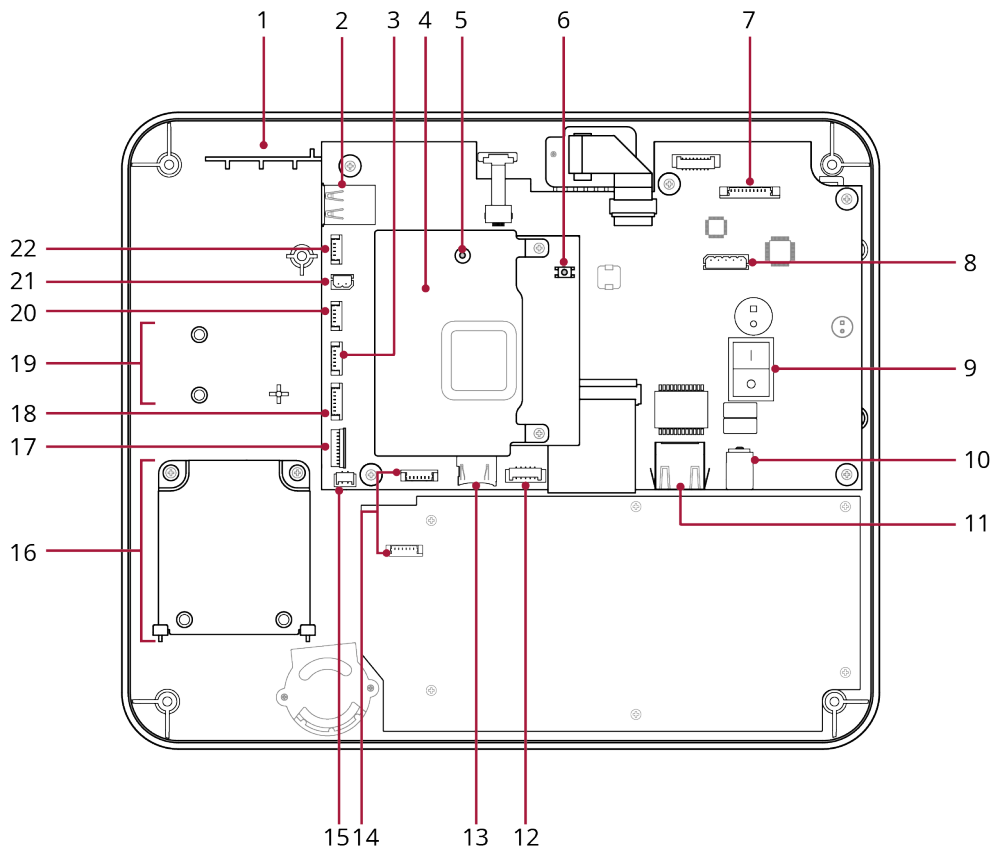
Frente



Nombre	Descripción
Cámara	Captura imágenes reales.
Micrófono	Reproduce la voz del usuario cuando se utiliza alguna aplicación como un teléfono, grabador de sonido, etc.
Indicador LED	Indica el estado de funcionamiento del dispositivo con el color del LED. <ul style="list-style-type: none"> ⏻ : Alimentación 🌐: Conexión de red 🔋: Alimentación de la batería
Unidad de autenticación de tarjeta RF	Ubicación para escanear la tarjeta para la autenticación.
Pantalla táctil LCD	Proporciona la interfaz de usuario para la operación.
Lector de banda magnética	Parte para deslizar la tarjeta magnética para la autenticación.
Teclado	<ul style="list-style-type: none"> 0 a 9: Se utiliza para introducir un número o una letra. ESC: Se utiliza para cancelar una operación. ← : Se utiliza para mover a la pantalla anterior o cancelar una entrada. F1 a F8: Asigna una función de Tiempo y Asistencia o Gestión de Personal. OK: Se utiliza para seleccionar y configurar un ítem. <, ^, >, v : Se utiliza para desplazarse al elemento deseado.
Unidad de autenticación de huellas	lugar para autenticación de huellas.
Parlante	Emite sonido.
Ranura USB externa	Puerto USB de host externo para funciones compatibles con NOVUS.

Nombre de cada parte

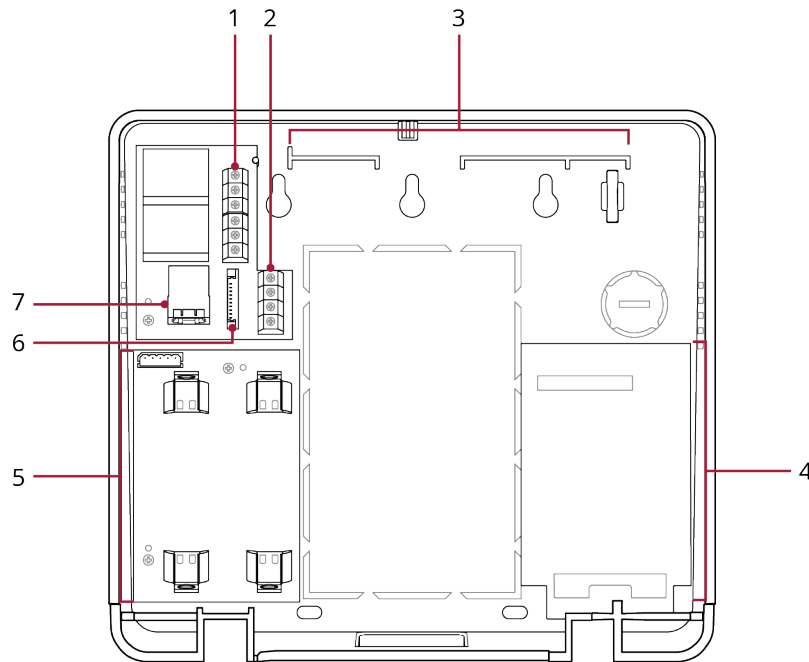
Cubierta



Nº	Nombre
1	Área de adhesión del módulo GPS
2	Ranura USB Interna para conexión de datos del Módem y el Dongle Wi-Fi
3	Conector de cable para módulo MSR
4	Disipador de calor
5	Botón de restablecimiento
6	Botón de descarga de FW
7	Conector del cable de placa E/S (Relé/Wiegand/RS-232)
8	Conector de interfaz de batería
9	Switch PoE
10	Conector de alimentación
11	Puerto de cable Ethernet/PoE
12	Conector de cable USB externo
13	Ranura de tarjeta SD
14	
15	
16	
17	
18	
19	
20	
21	
22	

14	Conector de cable del teclado
15	Conector de cable del parlante
16	Área de montaje del sensor de huellas dactilares
17	Conector FFC de huellas dactilares
18	Conector de cable de huellas dactilares
19	Área de montaje del módulo RFID
20	Conector de cable del módulo RFID
21	Conector de cable de la alimentación del módem
22	Conector de módulo GPS

Tapa posterior

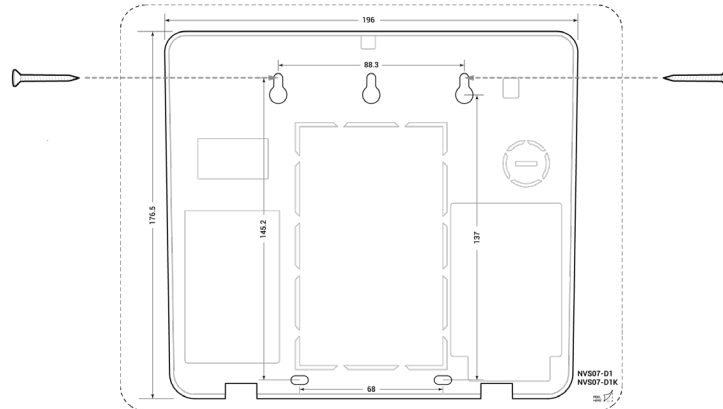


Nº	Nombre
1	Conector de relé
2	Conector Wiegand
3	Área de adhesión de la antena del módem
4	Área de montaje del módem
5	Sistema de baterías
6	Conector del cable de placa E/S (Relé/Wiegand/RS-232)
7	Puerto RS-232

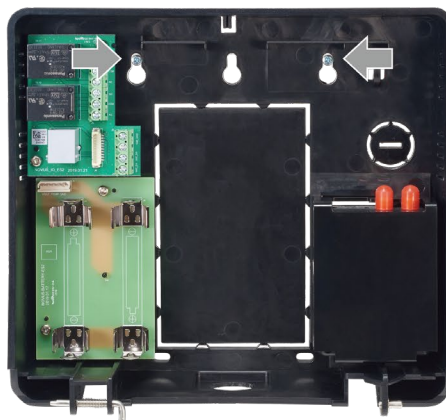
Instalación

Fijación del dispositivo

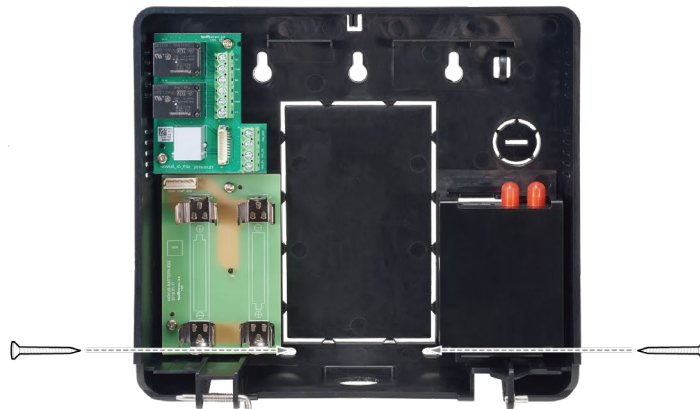
- 1 Desmonte la cubierta y la tapa posterior del NOVUS, consultando [Desmontar la cubierta del dispositivo](#).
- 2 Determine la posición correcta para instalar el NOVUS utilizando la plantilla de perforación proporcionada.
- 3 Atornille los dos tornillos de fijación primero en la posición superior de la plantilla de perforación.



- 4 Monte la cubierta posterior en los tornillos fijados a la pared.



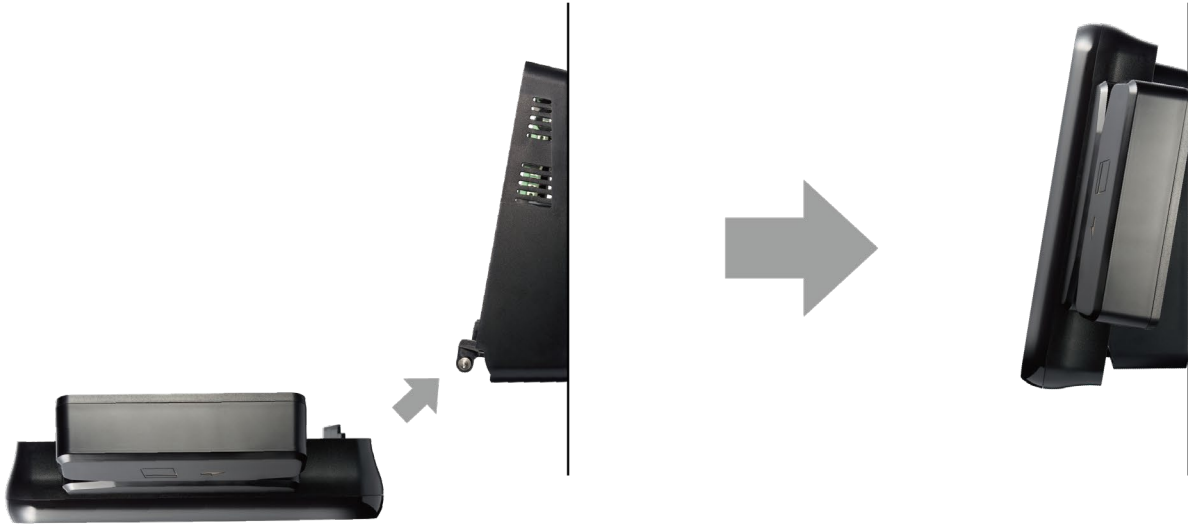
- 5 Fije firmemente la tapa posterior con los dos tornillos de fijación en la parte inferior.



NOTA

- Si instala NOVUS en una pared de concreto, taladre agujeros, inserte los anclajes de PVC y fíjelos con tornillos fijación.
- Si usa el módulo opcional de RFID, para evitar interferencias RF, se debe mantener una distancia de separación mínima. La distancia mínima de separación de NOVUS es de 10 cm del plano horizontal y 10 cm verticalmente.

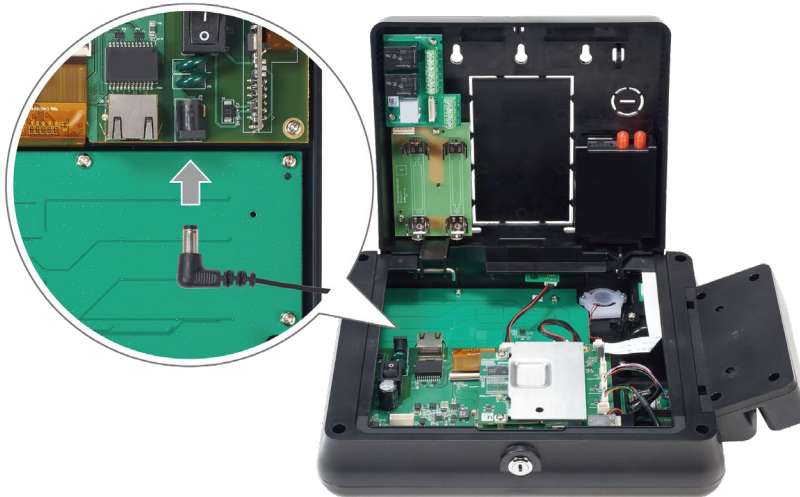
6 Instale la cubierta en la cubierta posterior.



Instalación de la parte básica

Fuente de alimentación

- 1 Desbloquee el dispositivo con la llave y abra la tapa posterior del dispositivo.
- 2 Conecte el cable de alimentación al conector de alimentación.



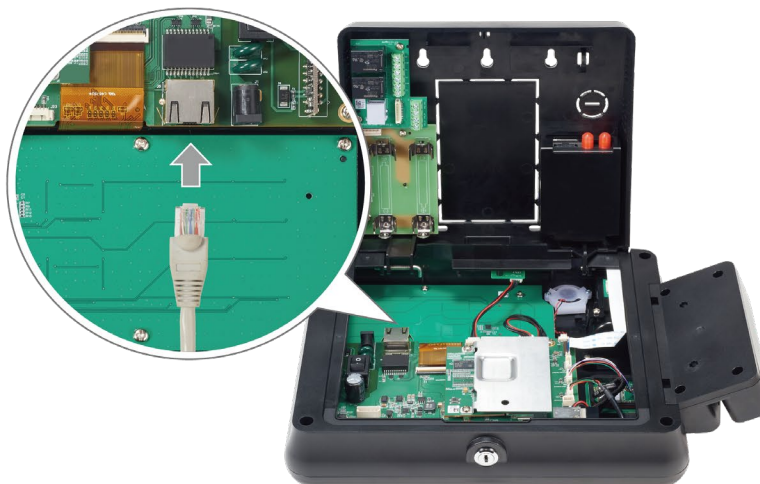
NOTA

- Utilice un adaptador de fuente de alimentación de 12 V DC con un mínimo de 2,140 mA y que cuente con la aprobación IEC/EN 60950-1. Si desea conectar y utilizar otro dispositivo con la misma fuente de poder, utilice un adaptador con una capacidad de corriente que sea igual o mayor al consumo total de potencia necesaria para ambos dispositivos.

Ethernet / PoE (Power over Ethernet)

Puede conectar el cable Ethernet directamente al PC o mediante un hub.

- 1 Desbloquee el dispositivo con la llave y abra la tapa posterior del dispositivo.
- 2 Conecte el cable Ethernet al puerto Ethernet/PoE.



NOTA

- Puede conectar el producto a un hub mediante un cable convencional CAT-5e.
- NOVUS tiene una función MDI/MDIX automática para que pueda conectarse a un PC directamente mediante un cable CAT-5e directo o cruzado.
- Para suministrar energía a través de un cable Ethernet, encienda la alimentación PoE habilitando el Switch PoE.

Batería


La Batería de respaldo puede ser usada para prevenir fallas de alimentación.

- 1 Desbloquee el dispositivo con la llave y abra la tapa posterior del mismo.
- 2 Monte las baterías en el soporte de la batería. Asegúrese de colocar las baterías en la polaridad correcta cuando las instale.



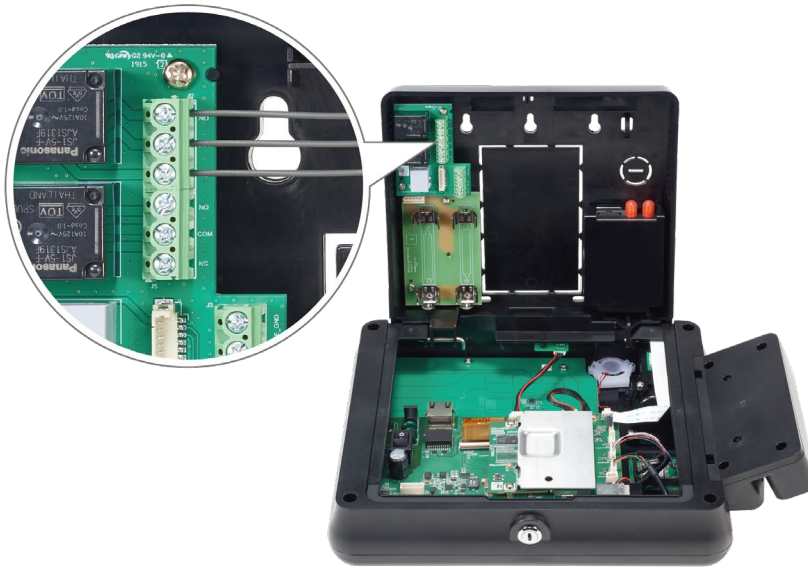
- 3 Conecte el cable de la batería al conector de la batería en la placa de la misma y la placa principal.

NOTA

- Al instalar baterías con fuente de alimentación DC o POE, NOVUS puede tomar algunos minutos en detectar las baterías para cargarlas con precisión y seguridad. Recomendamos apagar el dispositivo al montar las baterías.
- Utilice solo las baterías especificadas (3,400 mAh) con este dispositivo.
- Asegúrese de que los polos positivo y negativo estén correctamente orientados.
- Las baterías se venden por separado.
- Si la fuente de alimentación y la batería están conectadas al dispositivo, la batería se cargará. La pantalla  muestra cuando la batería se está cargando.

Relé

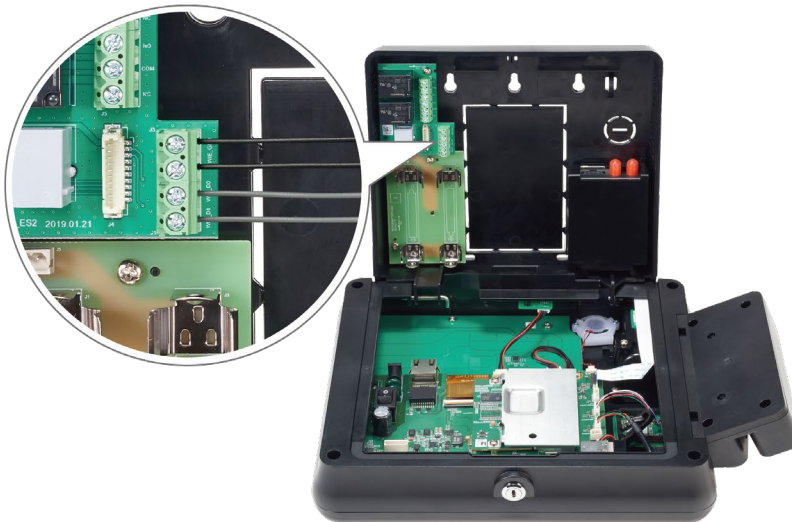
Puede controlar la puerta conectando el relé a NOVUS. Usando el SVP Android SDK, usted puede aplicar la característica para controlar el relé con su aplicación.



NOTA

- El cable de relé se vende por separado.
- Para conocer más sobre SVP Android SDK, visite <http://kb.supremainc.com/svpsdk>.

Wiegand



NOTA

- El cable Wiegand se vende por separado.

Instalación de la partes opcionales

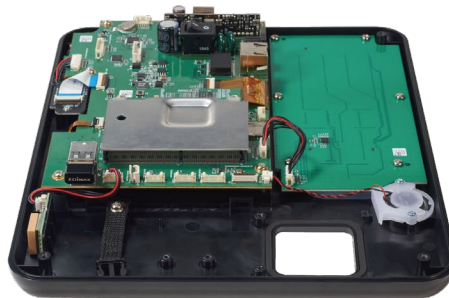
Puede ensamblar las partes opcionales que necesite en NOVUS. En esta sección se describe cómo montar cada parte opcional en NOVUS.

NOTA

- Antes de instalar las partes opcionales, apague la alimentación y el PoE del dispositivo y retire las baterías.
- Para obtener más información sobre las partes opcionales soportadas por NOVUS y cómo comprarlas, por favor visite <https://support.supremainc.com> y póngase en contacto con el Equipo Técnico de Suprema.

Sensor de huellas dactilares

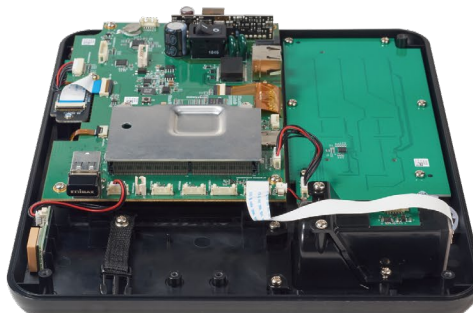
- 1** Desmonte las partes delantera y posterior de la cubierta consultando [Desmontar la cubierta](#).
- 2** Afloje los dos tornillos de la tapa del área de montaje del sensor de huellas dactilares y, a continuación, desmonte la tapa.



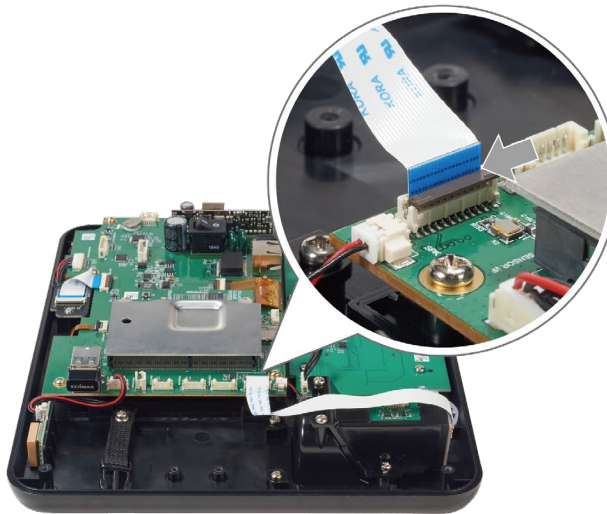
- 3** Monte el soporte con el sensor de huellas dactilares en la cubierta.



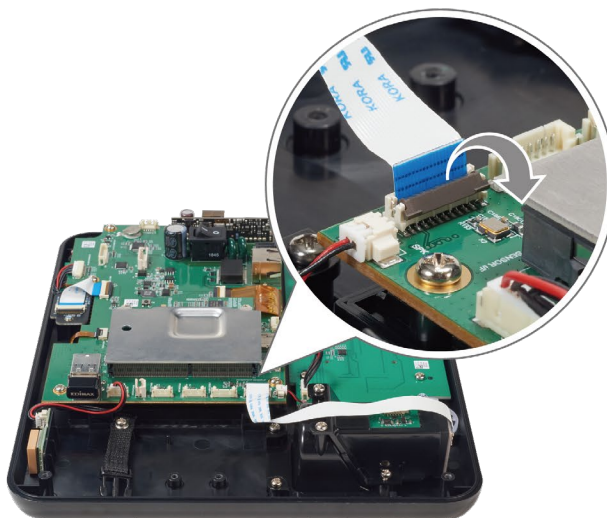
- 4** Fije firmemente el soporte en la cubierta con los cuatro tornillos.



- 5** Sostenga la FCC con el lado azul hacia arriba, conéctela de modo que el contorno punteado exterior entre en contacto con el soporte del conector de la FCC.



- 6** Cierre el soporte del conector FCC para fijar el cable en su lugar.



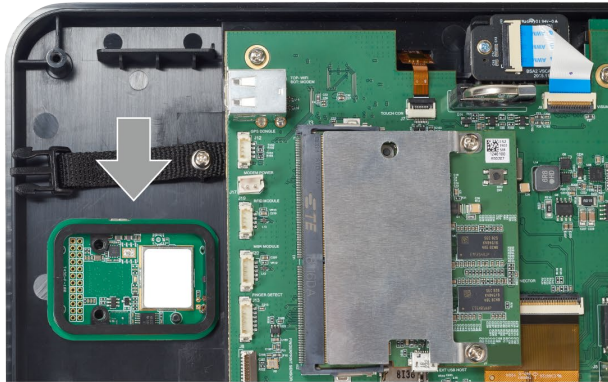
- 7** Conecte el cable de huellas dactilares al conector del cable de huellas dactilares.

NOTA

- Para obtener más información sobre cómo enrollar las huellas dactilares, consulte [Cómo enrollar una huella dactilar correctamente](#).

Módulo RFID

- 1 Desmonte las partes delantera y posterior de la cubierta consultando [Desmontar la cubierta](#).
- 2 Coloque el módulo RFID en el área de montaje del módulo RFID.



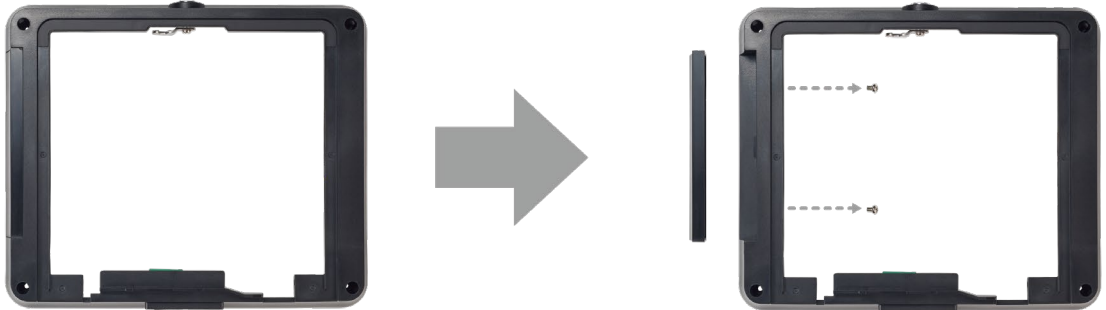
- 3 Fije firmemente el módulo RFID en la cubierta con los dos tornillos.



- 4 Conecte el cable RFID al conector del cable del módulo RFID.

MSR (Magnetic Swipe Reader - Lector de Banda Magnética)

- 1 Desmonte las partes delantera y posterior de la cubierta consultando [Desmontar la cubierta](#).
- 2 Afloje los dos tornillos en el interior del lado de la cubierta y desmonte la tapa.



- 3 Inserte el cable del módulo MSR en el orificio del lado de la cubierta y monte el lector en la cubierta.



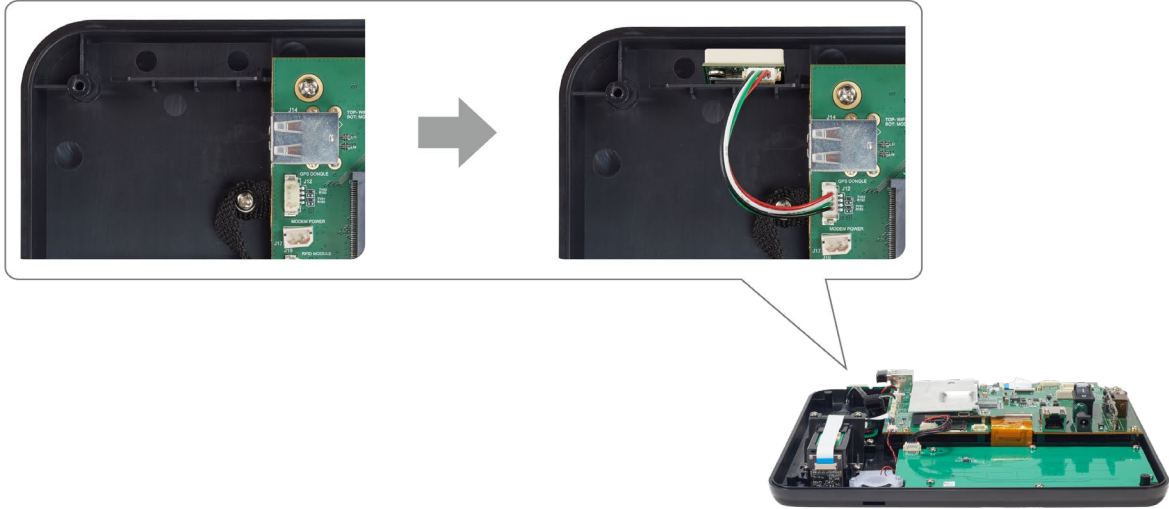
- 4 Fije firmemente el lector de banda magnética en la cubierta con los dos tornillos.



- 5 Conecte el cable del módulo MSR al conector del cable del módulo MSR.

GPS

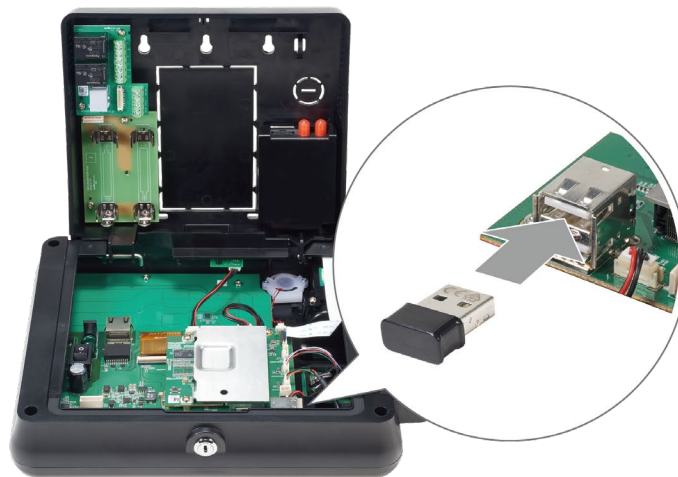
- 1 Desmonte las partes delantera y posterior de la cubierta consultando [Desmontar la cubierta](#).
- 2 Conecte el módulo GPS al área de adhesión del módulo GPS utilizando cinta adhesiva de doble cara.



- 3 Conecte el cable del módulo GPS al conector del cable del módulo GPS.

Ethernet inalámbrico

- 1 Desbloquee el dispositivo con la llave y abra la tapa posterior del dispositivo.
- 2 Conecte el Dongle WiFi a la parte superior de la ranura USB interna.



Módem celular

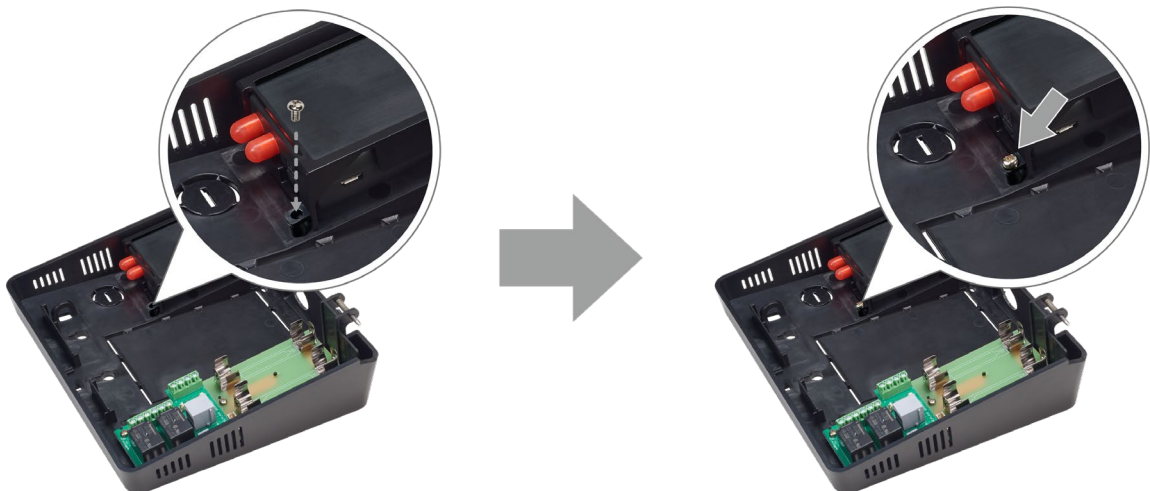
- 1 Desbloquee el dispositivo con la llave y abra la tapa posterior del mismo.
- 2 Inserte el modem celular en el soporte para modem, colocando primero la parte de arriba y asegurandolo luego usando tape de doble cara.



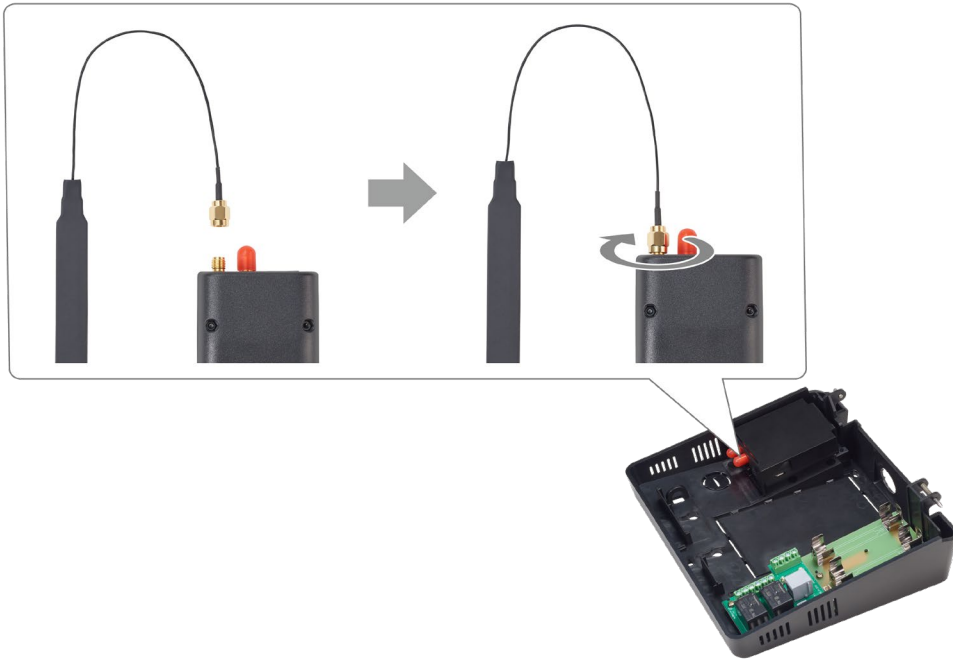
- 3 Monte la parte inferior del soporte en el área de montaje del módem ubicado en la tapa posterior y monte la parte superior.




- 4 Fije firmemente el soporte del módem en la tapa posterior con un tornillo.



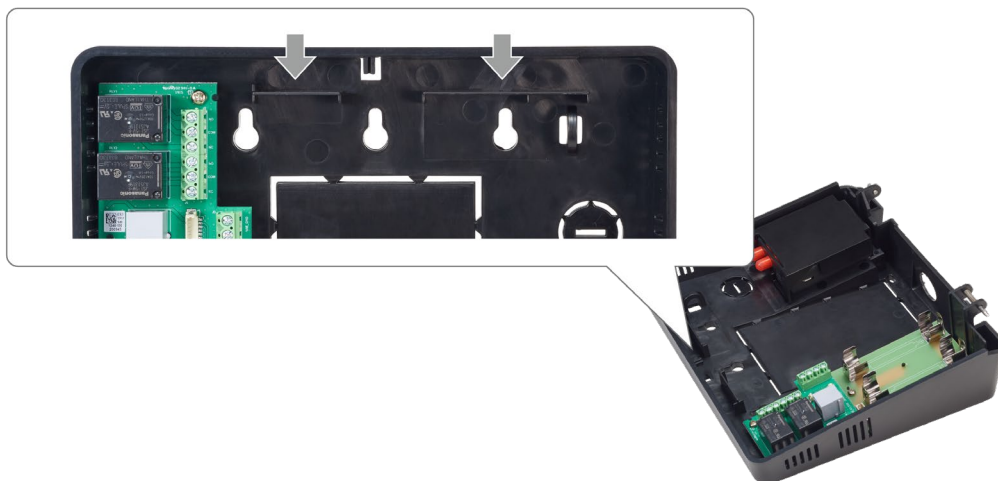
5 Conecte la antena del módem al módem celular.



NOTA

- Conecte la antena del módem al  lado del conector de antena del módem celular.

6 Conecte la antena del módem al área de adhesión de la antena del módem. La antena interna puede omitirse si el sitio requiere el uso de una antena remota para capturar la señal. La antena remota proporcionará un conector adecuado para su uso con el módem celular interno y tendrá la impedancia correcta.



7 Conecte el cable del módem al conector del cable de alimentación del módem en la cubierta.


8 Conecte el cable USB para los datos del módem en la parte inferior de la ranura USB interna.

Instalación de la aplicación

Las aplicaciones de Tiempo y Asistencia o Gestión de Personal se pueden instalar en NOVUS a través de un dispositivo de memoria USB.

NOTA

- Puede utilizar el SVP (Plataforma Versátil de Suprema - Suprema Versatile Platform) Android SDK para integrar las características de NOVUS a sus aplicaciones. Para conocer más sobre SVP Android SDK, visite <http://kb.supremainc.com/svpsdk>.

- 1** Guarde el archivo .apk de la aplicación Tiempo y Asistencia o Gestión de Personal en un dispositivo de memoria USB.
- 2** Inserte el dispositivo de memoria USB en el puerto USB externo.
- 3** Deslice la pantalla hacia arriba y, a continuación, toque en **Files** >  .
- 4** Seleccione el dispositivo de memoria USB.
- 5** Seleccione el archivo .apk de la aplicación que desea instalar.
- 6** Lea el mensaje emergente y pulse en **CONTINUE**.
- 7** Pulse **INSTALL**.
- 8** Pulse **DONE** para finalizar la instalación. Pulse **OPEN** para ejecutar la aplicación.


Desinstalación de la aplicación

Puede desinstalar la aplicación instalada en NOVUS.

- 1** Deslice una pantalla hacia arriba.
- 2** Mantenga pulsada la aplicación que desea desinstalar y, a continuación, pulse **App info**.
- 3** Pulse **UNINSTALL** > **OK**.

Actualización de la aplicación

Usted puede actualizar la versión de la aplicación.

- 1** Guarde el archivo .apk de la aplicación que se actualiza en un dispositivo de memoria USB.
- 2** Inserte el dispositivo de memoria USB en el puerto USB externo.
- 3** Deslice la pantalla hacia arriba y, a continuación, toque en **Files** >  .
- 4** Seleccione el dispositivo de memoria USB.
- 5** Seleccione el archivo .apk de la aplicación que desea actualizar.
- 6** Lea el mensaje emergente y pulse en **CONTINUE**.
- 7** Pulse **INSTALL**.
- 8** Pulse **DONE** para finalizar la instalación. Pulse **OPEN** para ejecutar la aplicación.

Especificaciones del producto

Dispositivo básico

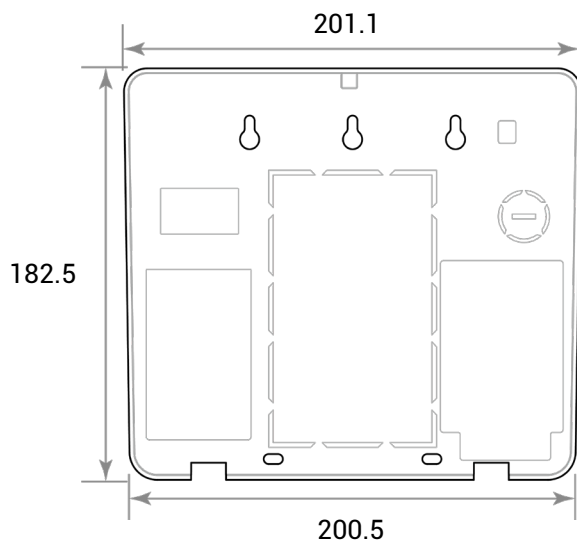
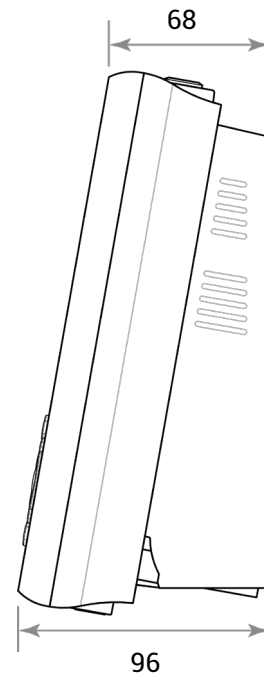
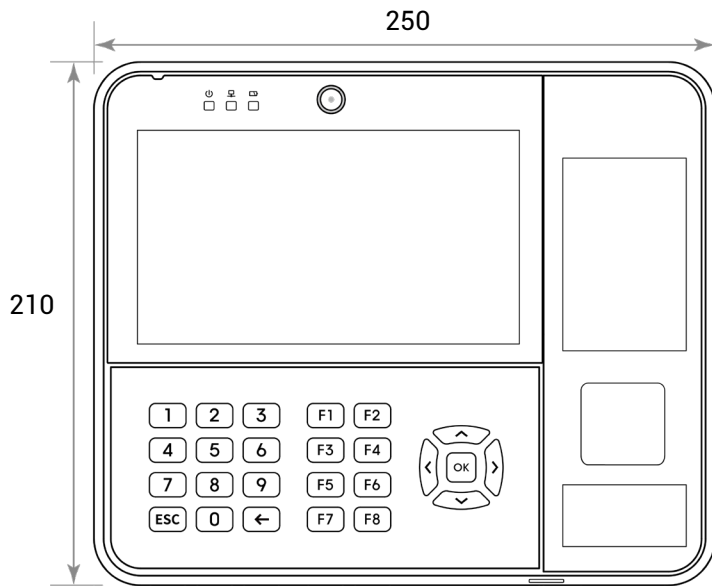
Categoría	Características	Especificación
General	CPU	1.0 GHz Núcleo Cuádruple
	Memoria	16 GB eMMC
	Tipo LCD	Pantalla Táctil de 7.0
	Resolución LCD	1024 x 600 píxeles
	LED	Múltiples colores
	Sonido	Parlante Máximo 1W
	Temperatura de funcionamiento	0°C ~ 50°C
	Temperatura de almacenamiento	-20°C ~ 70°C
	Operación en humedad	0% ~ 80%, sin condensación
	Humedad de almacenamiento	0% ~ 90%, sin condensación
	Tipo de cámara	CMOS 1M píxeles
	Resolución de cámara	1280 x 720 píxeles
	Angulo de cámara	Diagonal 122°, Horizontal 64.7°, Vertical 103.3°
	Dimensiones (An x Al x P)	210 mm x 250 mm x 96 mm
	Peso	<ul style="list-style-type: none"> NVS07-D1: 1,189 g NVS07-D1K: 1,235 g
Certificaciones	CE, FCC, RoHS, REACH, WEEE	
Capacidad	Máx. Usuario (1:1)	50,000
	Máx. Usuario (1:N)	20,000
	Máx. Plantilla (1:1)	100,000 * Dos plantillas por dedo
	Máx. Plantilla (1:N)	40,000 * Dos plantillas por dedo
Interfaz	Ethernet	Compatible (10/100 Mbps, MDI/MDI-X automático)
	PoE+	Soportado (compatible con IEEE 802.3at)
	RS-232	Soportado (RXD, TXD, CTS, RTS)
	Wiegand	1 canal de entrada
	Relé	2 relés
	USB	USB 2.0 (Host)
Eléctrico	Tarjeta SD	Soportado
	Alimentación	<ul style="list-style-type: none"> Voltaje: 12 V DC Corriente: Máx. 2,140mA (Opción completa)
	Entrada Wiegand VIH	<ul style="list-style-type: none"> Máx. 5V Mín. 3V
	Entrada Wiegand VIL	Máx. 1V
	Entrada Wiegand con Resistencia de Pull-up	internamente de Pull-up a 4.7kΩ
Relé	<ul style="list-style-type: none"> Voltaje: Máx. 100 VDC / 250 VAC Corriente: Máx. 5 A (DC) / 6 A (CA) 	

Partes opcionales

Categoría	Especificación
Huellas Dactilares	<ul style="list-style-type: none">• Sensor: Sensor óptico (OP6)• Plantilla: SUPREMA / ISO 19794-2 / ANSI 378
RFID	<ul style="list-style-type: none">• R1: 125kHz EM, & 13.56MHz MIFARE, MIFARE Plus, DESFire/EV1, FeliCa, HID iCLASS SE/SR/Seos (UID Only), Legic Advant (UID Only)• R2: 125kHz EM, HID Prox & 13.56MHz MIFARE, MIFARE Plus, DESFire/EV1, FeliCa, HID iCLASS SE/SR/Seos, Legic Advant (UID Only)• R3: 125kHz EM & 13.56MHz MIFARE, MIFARE Plus, DESFire/EV1, Legic Advant/Prime (Planned)
MSR	Seleccionable
Módem celular	Sierra - GL7500
GPS	Seleccionable
Wi-Fi	802.11 b/g/n/ac
Batería	<ul style="list-style-type: none">• Voltaje: 7.4 V (Max. 8.4 V)• Capacity: 3,400 mAh

Dimensiones

(Unidad: mm)



FCC compliance information

FCC Compliance Statement

This device complies with part 15 of the FCC rules. Operation is subject to the following two conditions: (1) This device may not cause harmful interference, and (2) this device must accept any interference received, including interference that may cause undesired operation.

FCC Interference Statement

This equipment has been tested and found to comply with the limits for a Class A digital device, pursuant to part 15 of the FCC Rules. These limits are designed to provide reasonable protection against harmful interference when the equipment is operated in a commercial environment.

This equipment generates, uses and can radiate radio frequency energy and, if not installed and used in accordance with the instructions, may cause harmful interference to radio communications. Operation of this equipment in a residential area is likely to cause harmful interference in which case the user will be required to correct the interference at his own expense.

FCC Caution

Any changes or modifications not expressly approved by the party responsible for compliance could void the user's authority to operate this equipment. This transmitter must not be co-located or operating in conjunction with any other antenna or transmitter.

FCC Radiation Exposure Statement

This equipment complies with FCC radiation exposure limits set forth for an uncontrolled environment. This equipment should be installed and operated with minimum distance 20 cm between the radiator and your body. This transmitter must not be co-located or operating in conjunction with any other antenna or transmitter.

Industry Canada Statement

Industry Canada Statement

This device complies with Industry Canada licence-exempt RSS standard(s). Operation is subject to the following two conditions: (1) this device may not cause interference, and (2) this device must accept any interference, including interference that may cause undesired operation of the device.

Industry Canada Radiation Exposure Statement

This equipment complies with IC radiation exposure limits set forth for an uncontrolled environment. This equipment should be installed and operated with minimum distance 20 cm between the radiator & your body.

Separation Distance: The separation distance is the distance that must be maintained between the device under test and the user. This separation distance is specified by the manufacturer in the user manual as per the requirements of RSS-102. It may be greater than the compliance distance but must be based on typical usage of the device under test.

EU Declaration of Conformity (CE)

This product is CE marked according to the provisions of the Radio Equipment Directive (RED) 2014/53/EU. Hereby, Suprema Inc. declares that this product is in compliance with the essential requirements and other relevant provisions of Radio Equipment Directive (RED) 2014/53/EU.

- Frecuencia NFC: 13.56 MHz
- Frecuencia RFID: 13.56 MHz + 125 kHz

For more information, contact us at the following contact information.

Suprema Inc.

Website: <https://www.supremainc.com>

Address: 17F Parkview Tower, 248, Jeongjail-ro, Bundang- gu, Seongnam-si, Gyeonggi-do, 13554, Rep. of KOREA

Tel: +82-31-783-4502 / Fax: +82-31-783-4503

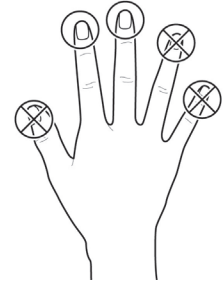
Apéndices

Cómo enrollar una huella dactilar correctamente

Para mejorar la velocidad de autenticación de huellas, se debe enrollar correctamente la huella dactilar. NOVUS puede reconocer una huella dactilar incluso si cambian el ángulo y la posición de entrada de las huellas dactilares de un usuario. La velocidad de autenticación mejorará si al enrollar una huella se siguen estas instrucciones:

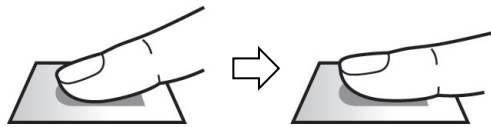
Seleccione un dedo para introducir la huella

- Como preparación para una situación en que la huella de un dedo en específico no pueda ser usado (por ejemplo, si el usuario está levantando una carga con una mano o tiene un dedo lastimado), se pueden enrollar hasta 10 huellas dactilares para cada usuario.
- En el caso de que un usuario cuya huella dactilar no se pueda reconocer correctamente, la velocidad de autenticación se puede mejorar si se enrolla el mismo dedo dos veces consecutivas.
- Si un dedo tiene un corte o la huella dactilar está borrosa, seleccione la huella de otro dedo.
- Se recomienda utilizar el dedo índice o el dedo medio al escanear la huella dactilar. La velocidad de autenticación puede disminuir si resulta difícil colocar con precisión otro dedo en el centro del sensor de huellas dactilares.



Método de enrollamiento de huellas dactilares

- 1 Cuando aparezca el mensaje "Escanear la huella dactilar" en la pantalla LCD para enrollar la huella, coloque el dedo con la huella que desea enrollar en la unidad de autenticación de huellas y oprima el dedo suavemente para una mejor autenticación.



- 2 Si después de un pitido aparece la pantalla de reintroducción, vuelva a escanear la huella dactilar del dedo enrollado (escanee la huella de un dedo que se va a enrollar dos veces).

NOTA

Precauciones para enrollar una huella dactilar

Cuando una huella dactilar es reconocida, se la compara con la huella registrada inicialmente, por lo cual, el enrollamiento inicial de huellas es el más importante. Siga las siguientes instrucciones para enrollar la huella dactilar:

- Presione el dedo lo suficiente como para hacer contacto con el sensor completamente.
- Coloque el centro de la huella dactilar en el centro del sensor.
- Si un dedo tiene un corte o la huella dactilar está borrosa, seleccione la huella dactilar de otro dedo.
- Escanee correctamente la huella dactilar sin moverla, de acuerdo con las instrucciones en pantalla.
- Si coloca el dedo en posición vertical, entonces el área de contacto con el sensor disminuirá y el ángulo del dedo se deformará, por lo que no se podrá realizar la autenticación de huellas dactilares.



Cuando el reconocimiento de huellas dactilares falla

NOVUS puede reconocer una huella dactilar independientemente de un cambio de estación o condición de los dedos. Sin embargo, la tasa de autenticación puede variar según el entorno externo o el método de entrada de las huellas dactilares.

Si se presentan problemas en la autenticación de huellas dactilares, se recomienda tomar las siguientes medidas.

- Si el dedo está cubierto de agua o sudor, séquelo y luego proceda a escanearlo.
- Si el dedo está demasiado seco, sople sobre las yemas de los dedos y luego proceda a escanearlo.
- Si el dedo tiene un corte, registre la huella dactilar de otro dedo.
- Si la huella dactilar inicialmente enrolada no se ha escaneado correctamente, vuelva a enrolarla de acuerdo con las 'Precauciones para enrolar una huella dactilar'.

Descargos de responsabilidad

- La información provista en este manual es para los productos Suprema.
- El derecho de su uso se reconoce únicamente para los productos incluidos en los términos y condiciones del acuerdo de venta garantizado por Suprema. No se reconoce el derecho de licencia a otros derechos de propiedad intelectual no incluidos en este manual.
- Suprema no garantiza ni se hace responsable de la idoneidad y comercialización del producto para un propósito específico, o la infracción de patentes, derechos de autor u otros derechos de propiedad intelectual con respecto a las ventas o el uso de productos de Suprema.
- No utilice el producto de Suprema en situaciones relacionadas con el uso médico, el rescate de vidas humanas o el mantenimiento de la vida, ya que una persona puede lesionarse o perder la vida debido a un mal funcionamiento del producto. Si se produce un accidente mientras un consumidor utiliza el producto en las situaciones anteriores descritas como ejemplos, los empleados, subsidiarias, sucursales, empresas afiliadas y distribuidores de Suprema no asumen ninguna responsabilidad, ni serán responsables de ningún gasto directo o indirecto relacionado, incluyendo los honorarios de abogados, incluso si el consumidor ha descubierto deficiencias en el diseño del producto o el proceso de fabricación y afirma esto como una falla significativa.
- Suprema puede modificar el tamaño del producto y las especificaciones en cualquier momento sin previo aviso para mejorar la seguridad, función y diseño del producto. Los diseñadores deben tener en cuenta que las funciones o descripciones indicadas como "a implementar" o "indefinidas" pueden cambiar en cualquier momento. Suprema implementará o definirá dichas funciones o descripciones en un futuro próximo, y Suprema no acepta ninguna responsabilidad por problemas de compatibilidad o cualquier otro problema que surja de dichos problemas de compatibilidad.
- Si desea obtener las especificaciones más recientes antes de realizar el pedido, póngase en contacto con Suprema a través de un representante de ventas o distribuidor local de Suprema.

Aviso de derechos de autor

Los derechos de autor de este documento corresponden a Suprema. Los derechos de otros nombres de productos, marcas comerciales y marcas registradas corresponden a cada persona u organización que los posea.

Licencia de código abierto

- The software of this product is based on "Linux Kernel 4.x", which is licensed under GPL. As for GPL, please refer to the [GNU General Public License](#) in this manual.
- This product uses the "BoringSSL", which is licensed under the OpenSSL and Original SSLeay licenses. As for the OpenSSL and Original SSLeay licenses, please refer to [OpenSSL License](#) and [Original SSLeay License](#) in this manual.
- This product uses the "Chromium", which is licensed under GPL. As for GPL, please refer to the [GNU General Public License](#) in this manual.
- This product uses the "AOSP", which is licensed under the Apache License 2.0. As for the Apache License 2.0, please refer to [Apache License](#) in this manual.
- To request the modified source code based on Linux Kernel 4.x and the source code of BoringSSL, Chromium, and AOSP, which are included in this product, please visit at <https://support.supremainc.com> and contact to Suprema Tech Team.

GNU GENERAL PUBLIC LICENSE

Version 2, June 1991

Copyright © 1989, 1991 Free Software Foundation, Inc. <<http://fsf.org/>>

Everyone is permitted to copy and distribute verbatim copies of this license document, but changing it is not allowed.

Preamble

The licenses for most software are designed to take away your freedom to share and change it. By contrast, the GNU General Public License is intended to guarantee your freedom to share and change free software--to make sure the software is free for all its users. This General Public License applies to most of the Free Software Foundation's software and to any other program whose authors commit to using it. (Some other Free Software Foundation software is covered by the GNU Library General Public License instead.) You can apply it to your programs, too.

When we speak of free software, we are referring to freedom, not price. Our General Public Licenses are designed to make sure that you have the freedom to distribute copies of free software (and charge for this service if you wish), that you receive source code or can get it if you want it, that you can change the software or use pieces of it in new free programs; and that you know you can do these things.

To protect your rights, we need to make restrictions that forbid anyone to deny you these rights or to ask you to surrender the rights. These restrictions translate to certain responsibilities for you if you distribute copies of the software, or if you modify it.

For example, if you distribute copies of such a program, whether gratis or for a fee, you must give the recipients all the rights that you have. You must make sure that they, too, receive or can get the source code. And you must show them these terms so they know their rights.

We protect your rights with two steps: (1) copyright the software, and (2) offer you this license which gives you legal permission to copy, distribute and/or modify the software.

Also, for each author's protection and ours, we want to make certain that everyone understands that there is no warranty for this free software. If the software is modified by someone else and passed on, we want its recipients to know that what they have is not the original, so that any problems introduced by others will not reflect on the original authors' reputations.

Finally, any free program is threatened constantly by software patents. We wish to avoid the danger that redistributors of a free program will individually obtain patent licenses, in effect making the program proprietary. To prevent this, we have made it clear that any patent must be licensed for everyone's free use or not licensed at all. The precise terms and conditions for copying, distribution and modification follow.

TERMS AND CONDITIONS FOR COPYING, DISTRIBUTION AND MODIFICATION

0. This License applies to any program or other work which contains a notice placed by the copyright holder saying it may be distributed under the terms of this General Public License. The "Program", below, refers to any such program or work, and a "work based on the Program" means either the Program or any derivative work under copyright law: that is to say, a work containing the Program or a portion of it, either verbatim or with modifications and/or translated into another language. (Hereinafter, translation is included without limitation in the term "modification".) Each licensee is addressed as "you".

Activities other than copying, distribution and modification are not covered by this License; they are outside its scope. The act of running the Program is not restricted, and the output from the Program is covered only if its contents constitute a work based on the Program (independent of having been made by running the Program). Whether that is true depends on what the Program does.

1. You may copy and distribute verbatim copies of the Program's source code as you receive it, in any medium, provided that you conspicuously and appropriately publish on each copy an appropriate copyright notice and disclaimer of warranty; keep intact all the notices that refer to this License and to the absence of any warranty; and give any other recipients of the Program a copy of this License along with the Program.

You may charge a fee for the physical act of transferring a copy, and you may at your option offer warranty protection in exchange for a fee.

2. You may modify your copy or copies of the Program or any portion of it, thus forming a work based on the Program, and copy and distribute such modifications or work under the terms of Section 1 above, provided that you also meet all of these conditions:

- a) You must cause the modified files to carry prominent notices stating that you changed the files and the date of any change.
- b) You must cause any work that you distribute or publish, that in whole or in part contains or is derived from the Program or any part thereof, to be licensed as a whole at no charge to all third parties under the terms of this License.
- c) If the modified program normally reads commands interactively when run, you must cause it, when started running for such interactive use in the most ordinary way, to print or display an announcement including an appropriate copyright notice and a notice that there is no warranty (or else, saying that you provide a warranty) and that users may redistribute the program under these conditions, and telling the user how to view a copy of this License. (Exception: if the Program itself is interactive but does not normally print such an announcement, your work based on the Program is not required to print an announcement.)

These requirements apply to the modified work as a whole. If identifiable sections of that work are not derived from the Program, and can be reasonably considered independent and separate works in themselves, then this License, and its terms, do not apply to those sections when you distribute them as separate works. But when you distribute the same sections as part of a whole which is a work based on the Program, the distribution of the whole must be on the terms of this License, whose permissions for other licensees extend to the entire whole, and thus to each and every part regardless of who wrote it.

Thus, it is not the intent of this section to claim rights or contest your rights to work written entirely by you; rather, the intent is to exercise the right to control the distribution of derivative or collective works based on the Program.

In addition, mere aggregation of another work not based on the Program with the Program (or with a work based on the Program) on a volume of a storage or distribution medium does not bring the other work under the scope of this License.

3. You may copy and distribute the Program (or a work based on it, under Section 2) in object code or executable form under the terms of Sections 1 and 2 above provided that you also do one of the following:

- a) Accompany it with the complete corresponding machine-readable source code, which must be distributed under the terms of Sections 1 and 2 above on a medium customarily used for software interchange; or,
- b) Accompany it with a written offer, valid for at least three years, to give any third party, for a charge no more than your cost of physically performing source distribution, a complete machine-readable copy of the corresponding source code, to be distributed under the terms of Sections 1 and 2 above on a medium customarily used for software interchange; or,
- c) Accompany it with the information you received as to the offer to distribute corresponding source code. (This alternative is allowed only for noncommercial distribution and only if you received the program in object code or executable form with such an offer, in accord with Subsection b above.)

The source code for a work means the preferred form of the work for making modifications to it. For an executable work, complete source code means all the source code for all modules it contains, plus any associated interface definition files, plus the scripts used to control compilation and installation of the executable. However, as a special exception, the source code distributed need not include anything that is normally distributed (in either source or binary form) with the major components (compiler, kernel, and so on) of the operating system on which the executable runs, unless that component itself accompanies the executable.

If distribution of executable or object code is made by offering access to copy from a designated place, then offering equivalent access to copy the source code from the same place counts as distribution of the source code, even though third parties are not compelled to copy the source along with the object code.

4. You may not copy, modify, sublicense, or distribute the Program except as expressly provided under this License. Any attempt otherwise to copy, modify, sublicense or distribute the Program is void, and will automatically terminate your rights under this License. However, parties who have received copies, or rights, from you under this License will not have their licenses terminated so long as such parties remain in full compliance.

5. You are not required to accept this License, since you have not signed it. However, nothing else grants you permission to modify or distribute the Program or its derivative works. These actions are prohibited by law if you do not accept this

License. Therefore, by modifying or distributing the Program (or any work based on the Program), you indicate your acceptance of this License to do so, and all its terms and conditions for copying, distributing or modifying the Program or works based on it.

6. Each time you redistribute the Program (or any work based on the Program), the recipient automatically receives a license from the original licensor to copy, distribute or modify the Program subject to these terms and conditions. You may not impose any further restrictions on the recipients' exercise of the rights granted herein. You are not responsible for enforcing compliance by third parties to this License.

7. If, as a consequence of a court judgment or allegation of patent infringement or for any other reason (not limited to patent issues), conditions are imposed on you (whether by court order, agreement or otherwise) that contradict the conditions of this License, they do not excuse you from the conditions of this License. If you cannot distribute so as to satisfy simultaneously your obligations under this License and any other pertinent obligations, then as a consequence you may not distribute the Program at all. For example, if a patent license would not permit royalty-free redistribution of the Program by all those who receive copies directly or indirectly through you, then the only way you could satisfy both it and this License would be to refrain entirely from distribution of the Program.

If any portion of this section is held invalid or unenforceable under any particular circumstance, the balance of the section is intended to apply and the section as a whole is intended to apply in other circumstances.

It is not the purpose of this section to induce you to infringe any patents or other property right claims or to contest validity of any such claims; this section has the sole purpose of protecting the integrity of the free software distribution system, which is implemented by public license practices. Many people have made generous contributions to the wide range of software distributed through that system in reliance on consistent application of that system; it is up to the author/donor to decide if he or she is willing to distribute software through any other system and a licensee cannot impose that choice.

This section is intended to make thoroughly clear what is believed to be a consequence of the rest of this License.

8. If the distribution and/or use of the Program is restricted in certain countries either by patents or by copyrighted interfaces, the original copyright holder who places the Program under this License may add an explicit geographical distribution limitation excluding those countries, so that distribution is permitted only in or among countries not thus excluded. In such case, this License incorporates the limitation as if written in the body of this License.

9. The Free Software Foundation may publish revised and/or new versions of the General Public License from time to time. Such new versions will be similar in spirit to the present version, but may differ in detail to address new problems or concerns.

Each version is given a distinguishing version number. If the Program specifies a version number of this License which applies to it and "any later version", you have the option of following the terms and conditions either of that version or of any later version published by the Free Software Foundation. If the Program does not specify a version number of this License, you may choose any version ever published by the Free Software Foundation.

10. If you wish to incorporate parts of the Program into other free programs whose distribution conditions are different, write to the author to ask for permission. For software which is copyrighted by the Free Software Foundation, write to the Free Software Foundation; we sometimes make exceptions for this. Our decision will be guided by the two goals of preserving the free status of all derivatives of our free software and of promoting the sharing and reuse of software generally.

NO WARRANTY

11. BECAUSE THE PROGRAM IS LICENSED FREE OF CHARGE, THERE IS NO WARRANTY FOR THE PROGRAM, TO THE EXTENT PERMITTED BY APPLICABLE LAW. EXCEPT WHEN OTHERWISE STATED IN WRITING THE COPYRIGHT HOLDERS AND/OR OTHER PARTIES PROVIDE THE PROGRAM "AS IS" WITHOUT WARRANTY OF ANY KIND, EITHER EXPRESSED OR IMPLIED, INCLUDING, BUT NOT LIMITED TO, THE IMPLIED WARRANTIES OF MERCHANTABILITY AND FITNESS FOR A PARTICULAR PURPOSE. THE ENTIRE RISK AS TO THE QUALITY AND PERFORMANCE OF THE PROGRAM IS WITH YOU. SHOULD THE PROGRAM PROVE DEFECTIVE, YOU ASSUME THE COST OF ALL NECESSARY SERVICING, REPAIR OR CORRECTION.

12. IN NO EVENT UNLESS REQUIRED BY APPLICABLE LAW OR AGREED TO IN WRITING WILL ANY COPYRIGHT HOLDER, OR

ANY OTHER PARTY WHO MAY MODIFY AND/OR REDISTRIBUTE THE PROGRAM AS PERMITTED ABOVE, BE LIABLE TO YOU FOR DAMAGES, INCLUDING ANY GENERAL, SPECIAL, INCIDENTAL OR CONSEQUENTIAL DAMAGES ARISING OUT OF THE USE OR INABILITY TO USE THE PROGRAM (INCLUDING BUT NOT LIMITED TO LOSS OF DATA OR DATA BEING RENDERED INACCURATE OR LOSSES SUSTAINED BY YOU OR THIRD PARTIES OR A FAILURE OF THE PROGRAM TO OPERATE WITH ANY OTHER PROGRAMS), EVEN IF SUCH HOLDER OR OTHER PARTY HAS BEEN ADVISED OF THE POSSIBILITY OF SUCH DAMAGES.

END OF TERMS AND CONDITIONS

BoringSSL License

BoringSSL is a fork of OpenSSL. As such, large parts of it fall under OpenSSL licensing. Files that are completely new have a Google copyright and an ISC license. This license is reproduced at the bottom of this file.

Contributors to BoringSSL are required to follow the CLA rules for Chromium: <https://cla.developers.google.com/cla>

Files in `third_party/` have their own licenses, as described therein. The MIT license, for `third_party/flatbuffers`, which, unlike other `third_party` directories, is compiled into non-test libraries, is included below.

The OpenSSL toolkit stays under a dual license, i.e. both the conditions of the OpenSSL License and the original SSLeay license apply to the toolkit. See below for the actual license texts. Actually both licenses are BSD-style Open Source licenses. In case of any license issues related to OpenSSL please contact openssl-core@openssl.org.

The following are Google-internal bug numbers where explicit permission from some authors is recorded for use of their work. (This is purely for our own record keeping.)

27287199
27287880
27287883

OpenSSL License

Copyright (c) 1998-2011 The OpenSSL Project. All rights reserved.

Redistribution and use in source and binary forms, with or without modification, are permitted provided that the following conditions are met:

1. Redistributions of source code must retain the above copyright notice, this list of conditions and the following disclaimer.
2. Redistributions in binary form must reproduce the above copyright notice, this list of conditions and the following disclaimer in the documentation and/or other materials provided with the distribution.
3. All advertising materials mentioning features or use of this software must display the following acknowledgment: "This product includes software developed by the OpenSSL Project for use in the OpenSSL Toolkit. (<http://www.openssl.org/>)"
4. The names "OpenSSL Toolkit" and "OpenSSL Project" must not be used to endorse or promote products derived from this software without prior written permission. For written permission, please contact openssl-core@openssl.org.
5. Products derived from this software may not be called "OpenSSL" nor may "OpenSSL" appear in their names without prior written permission of the OpenSSL Project.
6. Redistributions of any form whatsoever must retain the following acknowledgment: "This product includes software developed by the OpenSSL Project for use in the OpenSSL Toolkit (<http://www.openssl.org/>)"

THIS SOFTWARE IS PROVIDED BY THE OpenSSL PROJECT ``AS IS'' AND ANY EXPRESSED OR IMPLIED WARRANTIES, INCLUDING, BUT NOT LIMITED TO, THE IMPLIED WARRANTIES OF MERCHANTABILITY AND FITNESS FOR A PARTICULAR PURPOSE ARE DISCLAIMED. IN NO EVENT SHALL THE OpenSSL PROJECT OR ITS CONTRIBUTORS BE LIABLE FOR ANY DIRECT, INDIRECT, INCIDENTAL, SPECIAL, EXEMPLARY, OR CONSEQUENTIAL DAMAGES (INCLUDING, BUT NOT LIMITED TO, PROCUREMENT OF SUBSTITUTE GOODS OR SERVICES; LOSS OF USE, DATA, OR PROFITS; OR BUSINESS INTERRUPTION) HOWEVER CAUSED AND ON ANY THEORY OF LIABILITY, WHETHER IN CONTRACT, STRICT LIABILITY, OR TORT (INCLUDING NEGLIGENCE OR OTHERWISE) ARISING IN ANY WAY OUT OF THE USE OF THIS SOFTWARE, EVEN IF ADVISED OF THE POSSIBILITY OF SUCH DAMAGE.

This product includes cryptographic software written by Eric Young (eay@cryptsoft.com). This product includes software written by Tim Hudson (tjh@cryptsoft.com).

Original SSLeay License

Copyright (C) 1995-1998 Eric Young (eay@cryptsoft.com) All rights reserved.

This package is an SSL implementation written by Eric Young (eay@cryptsoft.com). The implementation was written so as to conform with Netscapes SSL.

This library is free for commercial and non-commercial use as long as the following conditions are adhered to. The following conditions apply to all code found in this distribution, be it the RC4, RSA, lhash, DES, etc., code; not just the SSL code. The SSL documentation included with this distribution is covered by the same copyright terms except that the holder is Tim Hudson (tjh@cryptsoft.com).

Copyright remains Eric Young's, and as such any Copyright notices in the code are not to be removed. If this package is used in a product, Eric Young should be given attribution as the author of the parts of the library used. This can be in the form of a textual message at program startup or in documentation (online or textual) provided with the package.

Redistribution and use in source and binary forms, with or without modification, are permitted provided that the following conditions are met:

1. Redistributions of source code must retain the copyright notice, this list of conditions and the following disclaimer.
2. Redistributions in binary form must reproduce the above copyright notice, this list of conditions and the following disclaimer in the documentation and/or other materials provided with the distribution.
3. All advertising materials mentioning features or use of this software must display the following acknowledgement: "This product includes cryptographic software written by Eric Young (eay@cryptsoft.com)" The word 'cryptographic' can be left out if the routines from the library being used are not cryptographic related :-).
4. If you include any Windows specific code (or a derivative thereof) from the apps directory (application code) you must include an acknowledgement: "This product includes software written by Tim Hudson (tjh@cryptsoft.com)"

THIS SOFTWARE IS PROVIDED BY ERIC YOUNG ``AS IS'' AND ANY EXPRESS OR IMPLIED WARRANTIES, INCLUDING, BUT NOT LIMITED TO, THE IMPLIED WARRANTIES OF MERCHANTABILITY AND FITNESS FOR A PARTICULAR PURPOSE ARE DISCLAIMED. IN NO EVENT SHALL THE AUTHOR OR CONTRIBUTORS BE LIABLE FOR ANY DIRECT, INDIRECT, INCIDENTAL, SPECIAL, EXEMPLARY, OR CONSEQUENTIAL DAMAGES (INCLUDING, BUT NOT LIMITED TO, PROCUREMENT OF SUBSTITUTE GOODS OR SERVICES; LOSS OF USE, DATA, OR PROFITS; OR BUSINESS INTERRUPTION) HOWEVER CAUSED AND ON ANY THEORY OF LIABILITY, WHETHER IN CONTRACT, STRICT LIABILITY, OR TORT (INCLUDING NEGLIGENCE OR OTHERWISE) ARISING IN ANY WAY OUT OF THE USE OF THIS SOFTWARE, EVEN IF ADVISED OF THE POSSIBILITY OF SUCH DAMAGE.

The licence and distribution terms for any publically available version or derivative of this code cannot be changed. i.e. this code cannot simply be copied and put under another distribution licence [including the GNU Public Licence.]

ISC license used for completely new code in BoringSSL:
Copyright (c) 2015, Google Inc.

Permission to use, copy, modify, and/or distribute this software for any purpose with or without fee is hereby granted, provided that the above copyright notice and this permission notice appear in all copies.

THE SOFTWARE IS PROVIDED "AS IS" AND THE AUTHOR DISCLAIMS ALL WARRANTIES WITH REGARD TO THIS SOFTWARE INCLUDING ALL IMPLIED WARRANTIES OF MERCHANTABILITY AND FITNESS. IN NO EVENT SHALL THE AUTHOR BE LIABLE FOR ANY SPECIAL, DIRECT, INDIRECT, OR CONSEQUENTIAL DAMAGES OR ANY DAMAGES WHATSOEVER RESULTING FROM LOSS OF USE, DATA OR PROFITS, WHETHER IN AN ACTION OF CONTRACT, NEGLIGENCE OR OTHER TORTIOUS ACTION, ARISING OUT OF OR IN CONNECTION WITH THE USE OR PERFORMANCE OF THIS SOFTWARE.

The code in `third_party/ fiat` carries the MIT license:

Copyright (c) 2015-2016 the fiat-crypto authors (see <https://github.com/mit-plv/fiat-crypto/blob/master/AUTHORS>).

Permission is hereby granted, free of charge, to any person obtaining a copy of this software and associated documentation files (the "Software"), to deal in the Software without restriction, including without limitation the rights to use, copy, modify, merge, publish, distribute, sublicense, and/or sell copies of the Software, and to permit persons to whom the Software is furnished to do so, subject to the following conditions:

The above copyright notice and this permission notice shall be included in all copies or substantial portions of the Software.

THE SOFTWARE IS PROVIDED "AS IS", WITHOUT WARRANTY OF ANY KIND, EXPRESS OR IMPLIED, INCLUDING BUT NOT LIMITED TO THE WARRANTIES OF MERCHANTABILITY, FITNESS FOR A PARTICULAR PURPOSE AND NONINFRINGEMENT. IN NO EVENT SHALL THE AUTHORS OR COPYRIGHT HOLDERS BE LIABLE FOR ANY CLAIM, DAMAGES OR OTHER LIABILITY, WHETHER IN AN ACTION OF CONTRACT, TORT OR OTHERWISE, ARISING FROM, OUT OF OR IN CONNECTION WITH THE SOFTWARE OR THE USE OR OTHER DEALINGS IN THE SOFTWARE.

The code in `third_party/ sike` also carries the MIT license:

Copyright (c) Microsoft Corporation. All rights reserved.

Permission is hereby granted, free of charge, to any person obtaining a copy of this software and associated documentation files (the "Software"), to deal in the Software without restriction, including without limitation the rights to use, copy, modify, merge, publish, distribute, sublicense, and/or sell copies of the Software, and to permit persons to whom the Software is furnished to do so, subject to the following conditions:

The above copyright notice and this permission notice shall be included in all copies or substantial portions of the Software.

THE SOFTWARE IS PROVIDED "AS IS", WITHOUT WARRANTY OF ANY KIND, EXPRESS OR IMPLIED, INCLUDING BUT NOT LIMITED TO THE WARRANTIES OF MERCHANTABILITY, FITNESS FOR A PARTICULAR PURPOSE AND NONINFRINGEMENT. IN NO EVENT SHALL THE AUTHORS OR COPYRIGHT HOLDERS BE LIABLE FOR ANY CLAIM, DAMAGES OR OTHER LIABILITY, WHETHER IN AN ACTION OF CONTRACT, TORT OR OTHERWISE, ARISING FROM, OUT OF OR IN CONNECTION WITH THE SOFTWARE OR THE USE OR OTHER DEALINGS IN THE SOFTWARE

Licenses for support code

Parts of the TLS test suite are under the Go license. This code is not included in BoringSSL (i.e. libcrypto and libssl) when compiled, however, so distributing code linked against BoringSSL does not trigger this license:

Copyright (c) 2009 The Go Authors. All rights reserved.

Redistribution and use in source and binary forms, with or without modification, are permitted provided that the following conditions are met:

* Redistributions of source code must retain the above copyright notice, this list of conditions and the following disclaimer.

- * Redistributions in binary form must reproduce the above copyright notice, this list of conditions and the following disclaimer in the documentation and/or other materials provided with the distribution.
- * Neither the name of Google Inc. nor the names of its contributors may be used to endorse or promote products derived from this software without specific prior written permission.

THIS SOFTWARE IS PROVIDED BY THE COPYRIGHT HOLDERS AND CONTRIBUTORS "AS IS" AND ANY EXPRESS OR IMPLIED WARRANTIES, INCLUDING, BUT NOT LIMITED TO, THE IMPLIED WARRANTIES OF MERCHANTABILITY AND FITNESS FOR A PARTICULAR PURPOSE ARE DISCLAIMED. IN NO EVENT SHALL THE COPYRIGHT OWNER OR CONTRIBUTORS BE LIABLE FOR ANY DIRECT, INDIRECT, INCIDENTAL, SPECIAL, EXEMPLARY, OR CONSEQUENTIAL DAMAGES (INCLUDING, BUT NOT LIMITED TO, PROCUREMENT OF SUBSTITUTE GOODS OR SERVICES; LOSS OF USE, DATA, OR PROFITS; OR BUSINESS INTERRUPTION) HOWEVER CAUSED AND ON ANY THEORY OF LIABILITY, WHETHER IN CONTRACT, STRICT LIABILITY, OR TORT (INCLUDING NEGLIGENCE OR OTHERWISE) ARISING IN ANY WAY OUT OF THE USE OF THIS SOFTWARE, EVEN IF ADVISED OF THE POSSIBILITY OF SUCH DAMAGE.

BoringSSL uses the Chromium test infrastructure to run a continuous build, trybots etc. The scripts which manage this, and the script for generating build metadata, are under the Chromium license. Distributing code linked against BoringSSL does not trigger this license.

Copyright 2015 The Chromium Authors. All rights reserved.

Redistribution and use in source and binary forms, with or without modification, are permitted provided that the following conditions are met:

- * Redistributions of source code must retain the above copyright notice, this list of conditions and the following disclaimer.
- * Redistributions in binary form must reproduce the above copyright notice, this list of conditions and the following disclaimer in the documentation and/or other materials provided with the distribution.
- * Neither the name of Google Inc. nor the names of its contributors may be used to endorse or promote products derived from this software without specific prior written permission.

THIS SOFTWARE IS PROVIDED BY THE COPYRIGHT HOLDERS AND CONTRIBUTORS "AS IS" AND ANY EXPRESS OR IMPLIED WARRANTIES, INCLUDING, BUT NOT LIMITED TO, THE IMPLIED WARRANTIES OF MERCHANTABILITY AND FITNESS FOR A PARTICULAR PURPOSE ARE DISCLAIMED. IN NO EVENT SHALL THE COPYRIGHT OWNER OR CONTRIBUTORS BE LIABLE FOR ANY DIRECT, INDIRECT, INCIDENTAL, SPECIAL, EXEMPLARY, OR CONSEQUENTIAL DAMAGES (INCLUDING, BUT NOT LIMITED TO, PROCUREMENT OF SUBSTITUTE GOODS OR SERVICES; LOSS OF USE, DATA, OR PROFITS; OR BUSINESS INTERRUPTION) HOWEVER CAUSED AND ON ANY THEORY OF LIABILITY, WHETHER IN CONTRACT, STRICT LIABILITY, OR TORT (INCLUDING NEGLIGENCE OR OTHERWISE) ARISING IN ANY WAY OUT OF THE USE OF THIS SOFTWARE, EVEN IF ADVISED OF THE POSSIBILITY OF SUCH DAMAGE.

Chromium License

Copyright (C) 2014 The Chromium Authors. All rights reserved.

Redistribution and use in source and binary forms, with or without modification, are permitted provided that the following conditions are met:

- * Redistributions of source code must retain the above copyright notice, this list of conditions and the following disclaimer.
- * Redistributions in binary form must reproduce the above copyright notice, this list of conditions and the following disclaimer in the documentation and/or other materials provided with the distribution.
- * Neither the name of Google Inc. nor the names of its contributors may be used to endorse or promote products derived from this software without specific prior written permission.

THIS SOFTWARE IS PROVIDED BY THE COPYRIGHT HOLDERS AND CONTRIBUTORS "AS IS" AND ANY EXPRESS OR IMPLIED WARRANTIES, INCLUDING, BUT NOT LIMITED TO, THE IMPLIED WARRANTIES OF MERCHANTABILITY AND FITNESS FOR A PARTICULAR PURPOSE ARE DISCLAIMED. IN NO EVENT SHALL THE COPYRIGHT OWNER OR CONTRIBUTORS BE LIABLE FOR ANY DIRECT, INDIRECT, INCIDENTAL, SPECIAL, EXEMPLARY, OR CONSEQUENTIAL DAMAGES (INCLUDING, BUT NOT LIMITED TO, PROCUREMENT OF SUBSTITUTE GOODS OR SERVICES; LOSS OF USE, DATA, OR PROFITS; OR BUSINESS INTERRUPTION) HOWEVER CAUSED AND ON ANY THEORY OF LIABILITY, WHETHER IN CONTRACT, STRICT LIABILITY, OR TORT (INCLUDING NEGLIGENCE OR OTHERWISE) ARISING IN ANY WAY OUT OF THE USE OF THIS SOFTWARE, EVEN IF ADVISED OF THE POSSIBILITY OF SUCH DAMAGE.

Apache License

Version 2.0, January 2004 (<http://www.apache.org/licenses/>)

TERMS AND CONDITIONS FOR USE, REPRODUCTION, AND DISTRIBUTION

1. Definitions.

"License" shall mean the terms and conditions for use, reproduction, and distribution as defined by Sections 1 through 9 of this document.

"Licensor" shall mean the copyright owner or entity authorized by the copyright owner that is granting the License.

"Legal Entity" shall mean the union of the acting entity and all other entities that control, are controlled by, or are under common control with that entity. For the purposes of this definition, "control" means (i) the power, direct or indirect, to cause the direction or management of such entity, whether by contract or otherwise, or (ii) ownership of fifty percent (50%) or more of the outstanding shares, or (iii) beneficial ownership of such entity.

"You" (or "Your") shall mean an individual or Legal Entity exercising permissions granted by this License.

"Source" form shall mean the preferred form for making modifications, including but not limited to software source code, documentation source, and configuration files.

"Object" form shall mean any form resulting from mechanical transformation or translation of a Source form, including but not limited to compiled object code, generated documentation, and conversions to other media types.

"Work" shall mean the work of authorship, whether in Source or Object form, made available under the License, as indicated by a copyright notice that is included in or attached to the work (an example is provided in the Appendix below).

"Derivative Works" shall mean any work, whether in Source or Object form, that is based on (or derived from) the Work and for which the editorial revisions, annotations, elaborations, or other modifications represent, as a whole, an original work of authorship. For the purposes of this License, Derivative Works shall not include works that remain separable from, or merely link (or bind by name) to the interfaces of, the Work and Derivative Works thereof.

"Contribution" shall mean any work of authorship, including the original version of the Work and any modifications or additions to that Work or Derivative Works thereof, that is intentionally submitted to Licensor for inclusion in the Work by the copyright owner or by an individual or Legal Entity authorized to submit on behalf of the copyright owner. For the purposes of this definition, "submitted" means any form of electronic, verbal, or written communication sent to the Licensor or its representatives, including but not limited to communication on electronic mailing lists, source code control systems, and issue tracking systems that are managed by, or on behalf of, the Licensor for the purpose of discussing and improving the Work, but excluding communication that is conspicuously marked or otherwise designated in writing by the copyright owner as "Not a Contribution."

"Contributor" shall mean Licensor and any individual or Legal Entity on behalf of whom a Contribution has been received by Licensor and subsequently incorporated within the Work.

2. Grant of Copyright License. Subject to the terms and conditions of this License, each Contributor hereby grants to You a perpetual, worldwide, non-exclusive, no-charge, royalty-free, irrevocable copyright license to reproduce, prepare Derivative Works of, publicly display, publicly perform, sublicense, and distribute the Work and such Derivative Works in Source or Object form.

3. Grant of Patent License. Subject to the terms and conditions of this License, each Contributor hereby grants to You a perpetual, worldwide, non-exclusive, no-charge, royalty-free, irrevocable (except as stated in this section) patent license to make, have made, use, offer to sell, sell, import, and otherwise transfer the Work, where such license applies only to those patent claims licensable by such Contributor that are necessarily infringed by their Contribution(s) alone or by combination of their Contribution(s) with the Work to which such Contribution(s) was submitted. If You institute patent litigation against any entity (including a cross-claim or counterclaim in a lawsuit) alleging that the Work or a Contribution incorporated within the Work constitutes direct or contributory patent infringement, then any patent licenses granted to

You under this License for that Work shall terminate as of the date such litigation is filed.

4. Redistribution. You may reproduce and distribute copies of the Work or Derivative Works thereof in any medium, with or without modifications, and in Source or Object form, provided that You meet the following conditions:

- (a) You must give any other recipients of the Work or Derivative Works a copy of this License; and
- (b) You must cause any modified files to carry prominent notices stating that You changed the files; and
- (c) You must retain, in the Source form of any Derivative Works that You distribute, all copyright, patent, trademark, and attribution notices from the Source form of the Work, excluding those notices that do not pertain to any part of the Derivative Works; and
- (d) If the Work includes a "NOTICE" text file as part of its distribution, then any Derivative Works that You distribute must include a readable copy of the attribution notices contained within such NOTICE file, excluding those notices that do not pertain to any part of the Derivative Works, in at least one of the following places: within a NOTICE text file distributed as part of the Derivative Works; within the Source form or documentation, if provided along with the Derivative Works; or, within a display generated by the Derivative Works, if and wherever such third-party notices normally appear. The contents of the NOTICE file are for informational purposes only and do not modify the License. You may add Your own attribution notices within Derivative Works that You distribute, alongside or as an addendum to the NOTICE text from the Work, provided that such additional attribution notices cannot be construed as modifying the License.

You may add Your own copyright statement to Your modifications and may provide additional or different license terms and conditions for use, reproduction, or distribution of Your modifications, or for any such Derivative Works as a whole, provided Your use, reproduction, and distribution of the Work otherwise complies with the conditions stated in this License.

5. Submission of Contributions. Unless You explicitly state otherwise, any Contribution intentionally submitted for inclusion in the Work by You to the Licensor shall be under the terms and conditions of this License, without any additional terms or conditions. Notwithstanding the above, nothing herein shall supersede or modify the terms of any separate license agreement you may have executed with Licensor regarding such Contributions.

6. Trademarks. This License does not grant permission to use the trade names, trademarks, service marks, or product names of the Licensor, except as required for reasonable and customary use in describing the origin of the Work and reproducing the content of the NOTICE file.

7. Disclaimer of Warranty. Unless required by applicable law or agreed to in writing, Licensor provides the Work (and each Contributor provides its Contributions) on an "AS IS" BASIS, WITHOUT WARRANTIES OR CONDITIONS OF ANY KIND, either express or implied, including, without limitation, any warranties or conditions of TITLE, NON-INFRINGEMENT, MERCHANTABILITY, or FITNESS FOR A PARTICULAR PURPOSE. You are solely responsible for determining the appropriateness of using or redistributing the Work and assume any risks associated with Your exercise of permissions under this License.

8. Limitation of Liability. In no event and under no legal theory, whether in tort (including negligence), contract, or otherwise, unless required by applicable law (such as deliberate and grossly negligent acts) or agreed to in writing, shall any Contributor be liable to You for damages, including any direct, indirect, special, incidental, or consequential damages of any character arising as a result of this License or out of the use or inability to use the Work (including but not limited to damages for loss of goodwill, work stoppage, computer failure or malfunction, or any and all other commercial damages or losses), even if such Contributor has been advised of the possibility of such damages.

9. Accepting Warranty or Additional Liability. While redistributing the Work or Derivative Works thereof, You may choose to offer, and charge a fee for, acceptance of support, warranty, indemnity, or other liability obligations and/or rights consistent with this License. However, in accepting such obligations, You may act only on Your own behalf and on Your sole responsibility, not on behalf of any other Contributor, and only if You agree to indemnify, defend, and hold each Contributor harmless for any liability incurred by, or claims asserted against, such Contributor by reason of your accepting any such warranty or additional liability.

END OF TERMS AND CONDITIONS



suprema
BIOMETRICS & SECURITY

Suprema Inc.

17F Parkview Tower, 248, Jeongjail-ro, Bundang- gu, Seongnam-si, Gyeonggi-do, 13554, Rep. of KOREA

Tel: +82 31 783 4502 | Fax: +82 31 783 4503 | Inquiry: sales@supremainc.com

©2019 Suprema Inc. Suprema y los números y los nombres que identifican productos mencionados en este documento son marcas comerciales registradas de Suprema, Inc. Todas las marcas y los nombres de productos que no pertenecen a Suprema son marcas comerciales o marcas comerciales registradas de sus respectivas compañías. La apariencia del producto, el estado de la estructura o las especificaciones están sujetas a cambio sin previo aviso.